

LAND CORNER RECORDATION CERTIFICATE
Filing Requirement of Act 74, Mich. P.A. 1970 as Amended

For corners in

<u>Chippewa</u> (County)	Located In:	Corner Code #
1. Public Land Survey	T <u>49N</u> R <u>6W</u>	<u>E3</u>
	T _____ R _____	_____
	T _____ R _____	_____
2. Property Controlling in Section	S _____ T <u>49N</u> R <u>6W</u>	<u>16</u>
	S _____ T _____ R _____	_____
3. Miscellaneous Property in Sec.	S _____ T _____ R _____	_____
	S _____ T _____ R _____	_____

Register of Deeds Stamp & File Number

4. Lot No. _____, Recorded Plat _____
 5. Private Claims

16 Apr 24 2006
 E3 Apr 25 2006

I, Stephan J. Szyszkoski, in a field survey on _____, 20____ do hereby state that under requirements of P.A. 74, Michigan P.A. of 1970, the corner points mentioned in lines 1 and 2 above were in conformance with regulations and rules therefore as required in the current manual of survey instructions of the United States Department of the Interior, Bureau of Land Management or by a decree of a Court of Law and /or that the corner points mentioned in lines 3, 4 and 5 above were in conformance with the rules of the Michigan Board of Land Surveyors or by a Decree of a Court of Law; established, re-established, monumented, recovered, found as expressed below:

NOTE: Not more than 2 corners, all in the same town and range, may be recorded on this certificate.

A. Description of original monument and accessories and/or subsequent restoration:

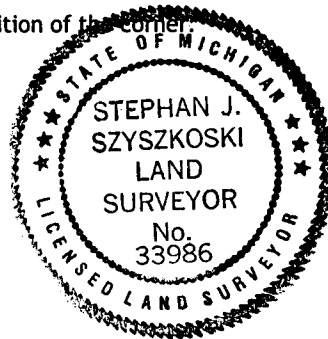
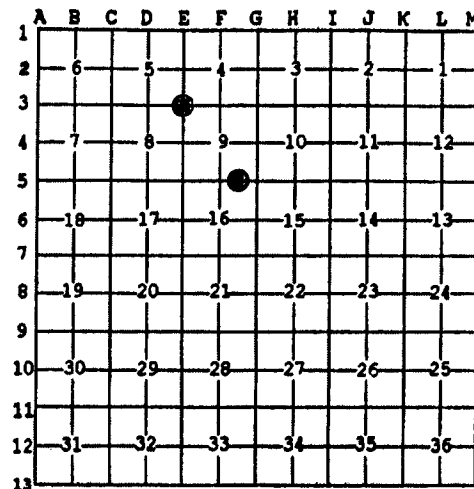
(E3) Corner common to Sections 4-5-8-9. 1975 - Corner reestablished by Billy D. Buckler RLS by double proportionate measurement between corners 1 mile East, 1.5 miles West, 1 mile North, and 1/2 mile South. Set 1" pipe with 4" aluminum cap. 6" J.Pine S20E 11.8', 12" J.Pine S73W 29.7'.
 (16-Sec. 9) East 1/16 corner between Sections 9 and 16. 1975 - Established by Billy D. Buckler RLS midway between Section and Quarter corners. Set 1" iron pipe with 4" aluminum cap. 6" J.Pine N64W 6.8', 6" J.Pine S85E 3.2'.

B. Description of corner evidence found and/or method applied in restoring or reestablishing corner:

(E3) Recovered the 1975 monument in good condition and at record bearing and distance from the 1975 witness trees, both in good condition. Left the monument in place and made new witnesses.
 (16-Sec. 9) Recovered the 1975 monument in good condition and at record bearing and distance from the 1975 witness trees, now both dead and down. Fd the monument to be midway between adjacent section and quarter corners and 1.3' north of a straight line between them. Accepted the monument as a careful and faithful establishment of the position of the corner. The corner lies about 20' south of an E-W trail.

C. Description of monument for corner and accessories established to perpetuate locating the position of the corner:

(E3) Fd. 1" ID I.pipe with 4" alum. MDNR cap. Set measuring nails in:	(16) Fd. 1" ID I.pipe with 4" alum. MDNR cap. Set measuring nails in:
11" J.Pine S18E 12.2' old marks *	9" R.Pine S74W 54.6' mrkd "E1/16 BT"
15" J.Pine S76W 30.0' do *	7" J.Pine S23W 34.1' do
8" J.Pine N30E 26.9' mrkd "S4 NBT"	9" J.Pine N12E 41.1' do
6" J.Pine S30W 17.05' "S8 NBT"	10" J.Pine N21W 40.05' do
Bearings are magnetic. Distances are to nail with tag.	Bearings are magnetic. Distances are to nail with tag.



Signed by Stephan J. Szyszkoski
 Surveyor's Michigan License No. 33986

Date 8/3/06

For the Michigan Department of Natural Resources, Office of Land and Facilities