

LAND CORNER RECORDATION CERTIFICATE
Filing Requirement of Act 74, Mich. P.A. 1970 as Amended

For corners in

<u>Chippewa</u> (County)	Located In:	Corner Code #
1. Public Land Survey	T <u>49N</u> R <u>6W</u>	<u>65</u>
	T <u>49N</u> R <u>6W</u>	<u>63</u>
	T _____ R _____	_____
	S _____ T _____ R _____	_____
2. Property Controlling in Section	S _____ T _____ R _____	_____
	S _____ T _____ R _____	_____
3. Miscellaneous Property in Sec.	S _____ T _____ R _____	_____
	S _____ T _____ R _____	_____

Register of Deeds Stamp & File Number

4. Lot No. _____, Recorded Plat _____
 5. Private Claims

63 Apr 25 2006
 65 Apr 24 2006

I, Stephan J. Szyszkoski, in a field survey on _____, 20____ do hereby state that under requirements of P.A. 74, Michigan P.A. of 1970, the corner points mentioned in lines 1 and 2 above were in conformance with regulations and rules therefore as required in the current manual of survey instructions of the United States Department of the Interior, Bureau of Land Management or by a decree of a Court of Law and /or that the corner points mentioned in lines 3, 4 and 5 above were in conformance with the rules of the Michigan Board of Land Surveyors or by a Decree of a Court of Law; established, re-established, monumented, recovered, found as expressed below:

NOTE: Not more than 2 corners, all in the same town and range, may be recorded on this certificate.

A. Description of original monument and accessories and/or subsequent restoration:

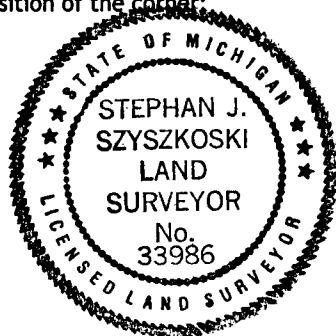
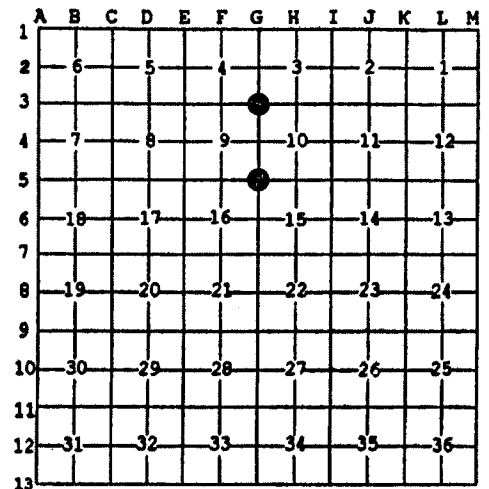
- (65) Corner common to Sections 9-10-15-16. 1975 - Billy D. Buckler RLS reestablished by single proportionate measurement between corners 1/2 mile South and 2 miles North. Set 1" pipe with 4" aluminum cap. 16" W.Pine N32W 80.9', 16" R.Pine S43W 103.1'.
- (63) Corner common to Sections 3-4-9-10. 1975 - Reestablished by Billy D. Buckler RLS by single proportionate measurement between corners 1 mile north and 1.5 miles south. Set 1" pipe with 4" aluminum cap. 6" Cedar S62W 20.38', 6" cedar N01W 77.08'.

B. Description of corner evidence found and/or method applied in restoring or reestablishing corner:

- (65) Recovered the 1975 monument in good condition and at record bearing and distance from the 1975 witness trees. The W.Pine NW in good condition, the R.Pine SW is now a stump. Left the monument in place and made new witnesses.
- (63) Recovered the 1975 monument in good condition and at record bearing and distance from the 1975 witnesses, both standing dead. Left the monument in place and made new witnesses.

C. Description of monument for corner and accessories established to perpetuate locating the position of the corner:

- | | |
|----------------------------------------------------------------------------|-------------------------------------------------------------------------|
| (65) Found 1" I.pipe with 4" alum. MDNR cap. Set measuring nails in: | (63) Found 1" ID I.pipe with 4" alum. MDNR cap. Set measuring nails in: |
| 19" W.Pine N30W 81.55' old blazes * | 9" Cedar S01E 14.6' mrkd "S10 NBT" |
| 11" R.Pine S14W 17.85' mrkd "S16 NBT" | 6" Balsam N76W 20.05' "S4 NBT" |
| 6" W.Pine N47E 21.75' "S10 NBT" | 5" Cedar S43W 25.9' "S9 NBT" |
| 8" J.Pine S40E 23.88' "S15 NBT" | 6" Balsam N50E 16.75' "S3 NBT" |
| Bearings are magnetic. Distances are to nail with tag. * denotes 1975 NBT. | Bearings are magnetic. Distances are to nail with tag. |



Signed by Stephan J. Szyszkoski
 Surveyor's Michigan License No. 33986

Date 8/3/06