

MICHIGAN  
DEPARTMENT OF CONSERVATION  
FORESTRY DIVISION

# LAND CORNER RECORD

T. 50 N.R. 6 W

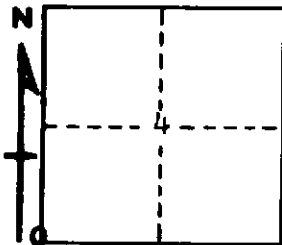
Chippewa COUNTY

DESCRIPTION OF CORNER Section Corner common to Sections 4, 5, 8, and 9

CORNER MONUMENT 1" Pipe with 4" Brass Cap.

DATE MONUMENT PLACED AND WITNESSED 10/28/60 with G. Hamilton

WITNESSES TO CORNER.... 13" Red Oak (Twin) N 20° E 137 Links



14" Red Pine N 34° W 167 Links

10" White Pine S 29° W 220 Links

AND

CIRCLE CORNER REGISTERED

**DESCRIPTION IN DETAIL AS TO HOW CORNER WAS LOCATED AND IDENTIFIED OR RESTORED.**

This corner was replaced from one Red Pine B.T. -- stump only remains -- in fair condition. Corner found by Rubick and Hamilton.

SURVEYOR'S SEAL

SIGNED Billy D. Buckler DATE July 14, 1961  
REGISTERED LAND SURVEYOR  
Billy D. Buckler