

SURVEY & REMONUMENTATION

JAN 23 2001

LAND CORNER RECORDATION CERTIFICATE
Filing Requirement of Act 74, Mich. P.A. 1970
 CLARE COUNTY REMONUMENTATION

20000009725
 Filed for Record in
 CLARE COUNTY MICHIGAN
 CAROL MCAULAY
 On 11-29-2000 At 12:12 PM.
 LAND CORNER 9.00
 OR Liber 2 Page 254 - 254

SECTION

For corners in

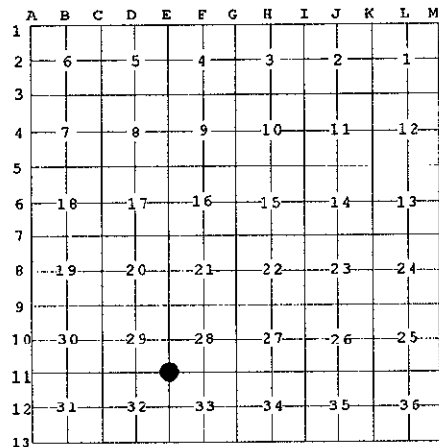
Clare (County)	Located In:	Corner Code #
1. Public Land Survey	T 17N R 5W	E11
2. Property Controlling in Section	T R	
3. Miscellaneous Property in Sec.	T R	

Instrument Liber Page
 20000009725 OR 2 254
 # 459-00
 Register of Deeds Stamp & File Num

4. Lot No. _____, Recorded Plat _____

5. Private Claims _____

I, Craig W. McVean, in a field survey on July 19, 20 00 do hereby state that under requirements of P.A. 74, Michigan P.A. of 1970, the corner points mentioned in lines 1 and 2 above were in conformance with regulations and rules therefore as required in the current manual of survey instructions of the United States Department of the Interior, Bureau of Land Management or by a decree of a Court of Law and/or that the corner points mentioned in lines 3, 4 and 5 above were in conformance with the rules of the Michigan Board of Land Surveyors or by a Decree of a Court of Law; established, re-established, monumented, recovered, found as expressed below:



NOTE: Not more than 2 corners, all in the same town and range, may be recorded on this certificate.

A. Description of original monument and accessories and/or subsequent restoration:

E11 - GLO-Hemlock 8" Cor.-H. Nicholson-1837
 Cedar 10" N45°E 2L.
 -CSR L.6, P.28,29,32 & 33
 Hemlock 20" S83°W 17 L.
 Hemlock 10" S63°E 9.5 L.
 -LCRC L.1, P.659-K.J. Ostling-1981
 Set DNR Mon. by Single Proportionate
 Measurement between the restored S1/4
 Sec. 29 & the found SE corner of Sec. 28

Unable to locate any positive evidence of the Johnson 1903 survey or/and subsequent monument. 6" Cedar S50°W 16.9'; 5" Cedar N40°W 12.2'

APPROVED LAND CORNER
 P.A. 345 of 1990
 Clare County
 Chairman [Signature]
 Date 10-25-00

B. Description of corner evidence found and/or method applied in restoring or reestablishing corner:

E11 - Sec. Cor. common to Sec. 28,29,32 & 33-Fd. 4" DNR Alum. Cap on 1" iron pipe in swamp. Could find no evidence of GLO or CSR position. Ostling's position is approx'y 69' N'ly of a double proportion position. A Old Fence is 30' ± S of D11 and runs E & parallel with Ostling's Sec. Line toward E11 for 1/4 mile. This seems to support Ostling's position in latitude. DNR Mon. accepted as the best available evidence of the position of the original corner.

C. Description of monument for corner and accessories established to perpetuate locating the position of the corner:

E11 - DNR Monument-Add ring of stone
 Set Blue Carsonite post 1'N
 S47°W 17.13' to set N&T in NW side 10" Cedar fd. scribed "NBT" (KJO)
 N42°W 12.45' to set N&T in NE side 7" Cedar fd. scribed "NBT" (KJO)
 S30°E 43.66' to set N&T in SW side 6" Fir
 N66°E 22.02' to set N&T in NW side 8" Cedar

DNR Mon. used & accepted in place of Clare Co. Remon. Mon.



Signed by Craig W. McVean
 Surveyor's Michigan License No. 39088

Date 10/18/2000