

SECTION & REMONUMENTATION

JAN 23 2001

SECTION LAND CORNER RECORDATION CERTIFICATE
 Filing Requirement of Act 74, Mich. P.A. 1970
 CLARE COUNTY REMONUMENTATION

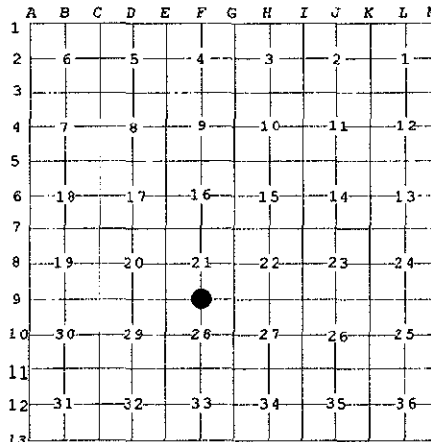
For corners in

Clare (County)	Located In:	Corner Code #
1. Public Land Survey	T 17N R 5W	F9
2. Property Controlling in Section	S T R	
3. Miscellaneous Property in Sec.	S T R	

20000009722
 Filed for Record in
 CLARE COUNTY MICHIGAN
 CAROL MCAULAY
 On 11-29-2000 At 12:12 PM.
 LAND CORNER 9.00
 OR Liber 2 Page 251 - 251
 #456-00
 Instrument Liber Page
 20000009722 OR 2 251
 # 153
 Register of Deeds Stamp & File Num

4. Lot No. _____, Recorded Plat _____
 5. Private Claims _____

I, Craig W. McVean, in a field survey on July 8, 1999 do hereby state that under requirements of P.A. 74, Michigan P.A. of 1970, the corner points mentioned in lines 1 and 2 above were in conformance with regulations and rules therefore as required in the current manual of survey instructions of the United States Department of the Interior, Bureau of Land Management or by a decree of a Court of Law and /or that the corner points mentioned in lines 3, 4 and 5 above were in conformance with the rules of the Michigan Board of Land Surveyors or by a Decree of a Court of Law; established, re-established, monumented, recovered, found as expressed below:



NOTE: Not more than 2 corners, all in the same town and range, may be recorded on this certificate.

A. Description of original monument and accessories and/or subsequent restoration:

- F9 - 1837, GLO set post, H. Nicholson.
 Beech 8" S 80° W 16 Links
 Beech 6" N 53° E 17 Links
- County Survey Record, Book 6, p. 28.
 Fence post 7" N 35.5° W 59.5 Links
 Fence post 8" S 35° E 63 Links
- 1976, P.B. Lapham, LCRC, L. 1, p. 455, found 5/8" rerod.
 Telephone pole N 40° W 53.00'
 40" Maple S 60° E 101.52'
 4" June Berry S 05° E 37.53'

- Rec. Sur. L.3, P. 355-1992

APPROVED LAND CORNER
 P.A. 345 of 1990
 Clare County

Chairman [Signature]
 Date 10-25-00

B. Description of corner evidence found and/or method applied in restoring or reestablishing corner:

- F9 - 1/4 corner common to Sec. 21 & 28 - Found 1/2" x 12" rebar highly corroded in monument box along with red Vit. Clay tile broken around it in 'T' intersection. Replaced 1/2" rebar with a 2" aluminum cap on a 5/8" x 34" rebar. 2" Alum. Cap in tile accepted as the best available evidence of the position of the original corner.

C. Description of monument for corner and accessories established to perpetuate locating the position of the corner:

- F9 - 5/8" x 34" rebar with 2" aluminum DNR cap in Mon. box.
 S68°E 140.79' to nail and tag in NE side 36" Maple
 N60°E 54.76' to nail and tag in SE side of Corner Fence Post
 S4°E 36.44' to nail and tag in W side 3" June Berry Clump (PL)
 N65°W 81.34' to nail and tag in NE side 14" Beech
 South 32.89' to Fd. 1/2" CIR #9433

2" DNR AC used & accepted in place of Clare Co. Remon. Mon.



Signed by Craig W. McVean
 Surveyor's Michigan License No. 39088

Date 10/18/2000