

SURVEY & REMONUMENTATION

JAN 23 2001

SECTION

LAND CORNER RECORDATION CERTIFICATE

Filing Requirement of Act 74, Mich. P.A. 1970

CLARE COUNTY REMONUMENTATION

200000009721
 Filed for Record in
 CLARE COUNTY MICHIGAN
 CAROL MCAULAY
 On 11-29-2000 At 12:12 PM.
 LAND CORNER 9.00
 OR Liber 2 Page 250 - 250

For corners in

Clare <small>(County)</small>	Located In:	Corner Code #
1. Public Land Survey	T 17N R 5W	G9
2. Property Controlling in Section	S T R	
3. Miscellaneous Property in Sec.	S T R	

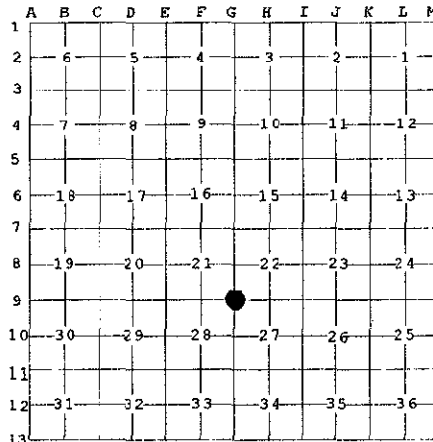
Instrument Liber Page
 200000009721 OR 2 250

455-00

Register of Deeds Stamp & File Num

4. Lot No. _____, Recorded Plat _____
 5. Private Claims _____

I, Craig W. McVean, in a field survey on July 18, 2000 do hereby state that under requirements of P.A. 74, Michigan P.A. of 1970, the corner points mentioned in lines 1 and 2 above were in conformance with regulations and rules therefore as required in the current manual of survey instructions of the United States Department of the Interior, Bureau of Land Management or by a decree of a Court of Law and/or that the corner points mentioned in lines 3, 4 and 5 above were in conformance with the rules of the Michigan Board of Land Surveyors or by a Decree of a Court of Law; established, re-established, monumented, recovered, found as expressed below:



NOTE: Not more than 2 corners, all in the same town and range, may be recorded on this certificate.

A. Description of original monument and accessories and/or subsequent restoration:

- G9 - 1837, GLO set 6" Pine for corner, H. Nicholson. - Rec. Sur. L.3, P. 355 - 1992
 Hemlock 6" South 3 Links
- County Survey Record, Book 6, p. 27.
 Pine 22" N 20° E 34.5 Links
 W. Birch 7" N 78° W 82 Links
- 1976, P.B. Lapham, LCRC L. 1, p. 455, found 5/8" rerod.
 3" W. Pine N 04° E 45.25'
 Power pole N 47° W 40.36'
 Power pole S 70° W 64.17'



B. Description of corner evidence found and/or method applied in restoring or reestablishing corner:

- G9 - Sec. Cor. Common to Sec. 21, 22, 27 & 28 - Found bent 1/2" rebar in monument box in E-W Bit. Rd. CL is 2'± S. Fence line N & Trail Rd. S. Removed Rebar & Fd. rusted away 3/4" iron pipe in ring of stone - 1.5' below surface. 1/2" Rebar & iron pipe accepted as the best available evidence of the position of the original corner.

C. Description of monument for corner and accessories established to perpetuate locating the position of the corner:

- G9 - Set 2" DNR Alum. Cap on 5/8" x 34" Rebar in center of rusted 3/4" iron pipe in place of 1/2" Rebar. Placed Mon. Box . N3°E 32.40' to fnd.nail in E side cedar fence post
 S35°E 48.34' to set nail and tag in E side 4" Maple
 S35°W 54.44' to set nail and tag in E side 6" Fir
 N47°W 40.52' to set nail and tag in S side Power Pole (PBL)
 N2°W 45.13' to set N & T in E. side 13" W. Pine (PBL)
- 2" DNR Mon. used & accepted in place of Clare Co. Remon. Mon.

APPROVED LAND CORNER
 P.A. 345 of 1990
 Clare County

Chairman Paul Lapham
 Date 10-25-00

Signed by Craig W. McVean
 Surveyor's Michigan License No. 39088

Date 10/18/2000