

JAN 23 2001

SECTION

LAND CORNER RECORDATION CERTIFICATE

Filing Requirement of Act 74, Mich. P.A. 1970

CLARE COUNTY REMONUMENTATION

200000009717  
Filed for Record in  
CLARE COUNTY MICHIGAN  
CAROL MCAULAY  
On 11-29-2000 At 12:12 PM.  
LAND CORNER 9.00  
OR Liber 2 Page 246 - 246

For corners in

Clare (County)	Located In:	Corner Code #
1. Public Land Survey	T 17N R 5W	I-9
2. Property Controlling in Section	S T R	
3. Miscellaneous Property in Sec.	S T R	

Instrument Liber Page  
200000009717 OR 2 246

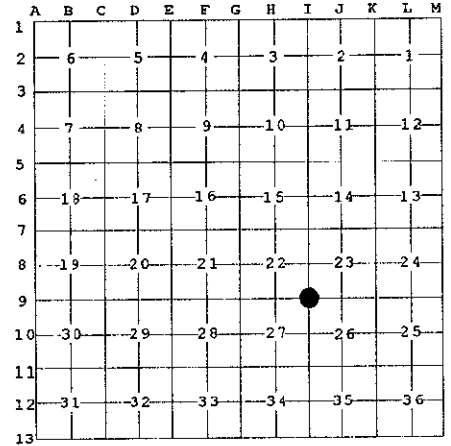
# 451-00

Register of Deeds Stamp & File Num.

4. Lot No. \_\_\_\_\_, Recorded Plat \_\_\_\_\_

5. Private Claims \_\_\_\_\_

I, Craig W. McVean, in a field survey on July 18, 20 00 do hereby state that under requirements of P.A. 74, Michigan P.A. of 1970, the corner points mentioned in lines 1 and 2 above were in conformance with regulations and rules therefore as required in the current manual of survey instructions of the United States Department of the Interior, Bureau of Land Management or by a decree of a Court of Law and for that the corner points mentioned in lines 3, 4 and 5 above were in conformance with the rules of the Michigan Board of Land Surveyors or by a Decree of a Court of Law; established, re-established, monumented, recovered, found as expressed below:



NOTE: Not more than 2 corners, all in the same town and range, may be recorded on this certificate.

A. Description of original monument and accessories and/or subsequent restoration:

- I-9 - 1837, GLO, set post, H. Nicholson.
    - Hemlock 10" S 47° E 8 Links
    - Hemlock 6" S 32° W 4 Links
  - County Survey Record, Book 6, p. 26.
    - Fence post 7" S 16.5° E 39.5 Links
    - Pine 10" N 67.5° E 72.5 Links
  - 1973, P. Lapham, LCRC #118-73, Fd. Old Pipe, reset 1/2" rerod.
    - Fence corner South 37.3'
    - Fence corner North 34.5'
    - 4" Pine N 20° W 52.7'
- Rec. Sur. L.1, P.248-1972;  
L.1, P.309-1972; L.1, P.567-1973;  
L.2, P.351-1978; L.3, P.756-1998

APPROVED LAND CORNER  
P.A. 345 of 1990  
Clare County

Chairman Paul B. Lapham  
Date 10-25-00

B. Description of corner evidence found and/or method applied in restoring or reestablishing corner:

- I-9 - Sec. Cor. Common to Sec. 22,23,26 & 27 - Found 1/2" rerod with P. Lapham cap #9433 in monument box. CL of E-W Bit Rd. is 2' N. Fence line N & S. 1/2" capped iron accepted as the best available evidence of the position of the original corner.

C. Description of monument for corner and accessories established to perpetuate locating the position of the corner:

- I-9 - Replaced capped 1/2" x 18" Rebar w/ 2" DNR Alum. Cap on 5/8" x 34" Rebar in Mon. box.
    - N25°W 52.92' to set nail and tag in W side 12" Red Pine (PBL)
    - North 32.97' to a concrete monument-SW side of Fence corner
    - S14°E 61.30' to nail and tag in E side 12" White Oak
    - South 38.48' to find nail in E side fence post
    - S16°W 52.73' to nail and tag in W side 16" White Oak
- 2" DNR Mon. used & accepted in place of Clare Co. Remon. Mon.



Signed by Craig W. McVean  
Surveyor's Michigan License No. 39088

Date 10/18/2000