

LAND CORNER RECORDATION CERTIFICATE

Filing Requirement of Act 74, Mich. PA 1970

For Corners In: _____
 Clare _____ Located In _____ Corner Code # _____
 (County)

- | | | | | | |
|--------------------------------------|------------|--------------|-------------|--|-----------|
| 1. Public Land Survey | T _____ | R _____ | | | |
| | T _____ | R _____ | | | |
| 2. Property Controlling in Section | S <u>9</u> | T <u>19N</u> | R <u>6W</u> | | <u>3</u> |
| | S <u>9</u> | T <u>19N</u> | R <u>6W</u> | | <u>10</u> |
| 3. Miscellaneous Property in Section | S _____ | T _____ | R _____ | | |
| | S _____ | T _____ | R _____ | | |

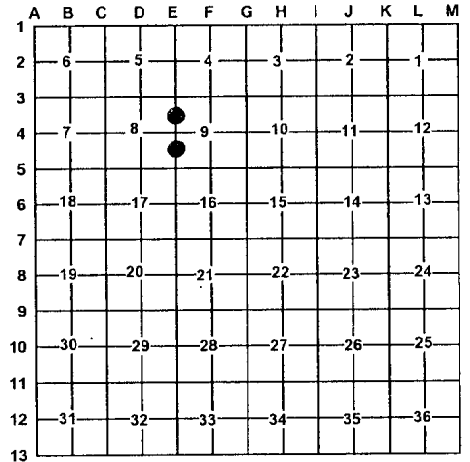
4. Lot No: _____ Recorded Plat: _____

5. Private Claims: _____

I, Craig W. McVean, in a field survey on Sept. 9, 2008 do hereby state that under requirements of PA 74, Michigan PA of 1970, the corner points mentioned in lines 1 and 2 above were in conformance with regulations and rules therefore as required in the current manual of survey instructions of the United States Department of the Interior, Bureau of Land Management or by a decree of a Court of Law and/or that the corner points mentioned in lines 3, 4 and 5 above were in conformance with the rules of the Michigan Board of Land Surveyors or by a Decree of a Court of Law; established, re-established, monumented, recovered, found as expressed below:

NOTE: Not more than 2 corners, all in the same town and range, may be recorded on this certificate.

Register of Deeds Stamp & File Number



A. Description of original monument and accessories and/or subsequent restoration:

3 - None.

10 - None.



B. Description of corner evidence found and/or method applied in restoring or re-establishing corner:

3 - N 1/16 Corner common to Sections 8 & 9 - Set a stamped 2" Aluminum cap on 5/8" x 34" rebar per Standard BLM procedure flush with North-South Bit. Road 2' East of centerline.

10 - S 1/16 Corner common to Sections 8 & 9 - Set a stamped 2" Aluminum cap on a 5/8" x 34" rebar per Standard BLM procedure, flush with North-South bit. Road. 1.2' East of centerline.

C. Description of monument for corner and accessories established to perpetuate locating the position of the corner:

3 - Stamped 2" Aluminum Cap on 5/8" x 34" rebar
 S31°W 89.86' to set Nail & Tag on SE side 6" Red Pine
 S69°W 65.03' to set Nail & Tag on SE side 10" Red Pine
 N22°E 73.57' to set Nail & Tag on SE side Power Pole
 S61°E 83.53' to set Nail & Tag on S. side 10" Jack Pine
 Set Blue Carsonite Post with location tag 33' West

10 - Stamped 2" Aluminum Cap on 5/8" x 34" rebar
 N51°E 136.34' to set Nail & Tag on SE side 6" Jack Pine
 S58°W 78.11' to set Nail & Tag on SE side 11" Red Pine
 N46°W 87.95' to set Nail & Tag on SW side 10" White Pine
 N87°42'E 33.03' to set 2" Aluminum cap on 5/8" x 34" rebar on-line with a Blue Carsonite Post with location tag.

Signed by: Craig W. McVean
 Surveyor's Michigan License No.: 39088

Date: 5/26/2009