

LAND CORNER RECORDATION CERTIFICATE

Filing Requirement of Act 74, Mich. PA 1970

For Corners In:
Clare Located In _____ Corner Code # _____
 (County)

1. Public Land Survey	T _____	R _____	_____
	T _____	R _____	_____
2. Property Controlling in Section	S <u>9</u>	T <u>19N</u>	R <u>6W</u> <u>11</u>
	S <u>9</u>	T <u>19N</u>	R <u>6W</u> <u>14</u>
3. Miscellaneous Property in Section	S _____	T _____	R _____
	S _____	T _____	R _____

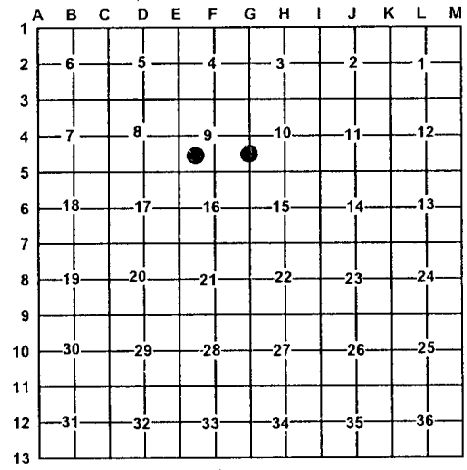
Register of Deeds Stamp & File Number

4. Lot No: _____ Recorded Plat: _____

5. Private Claims: _____

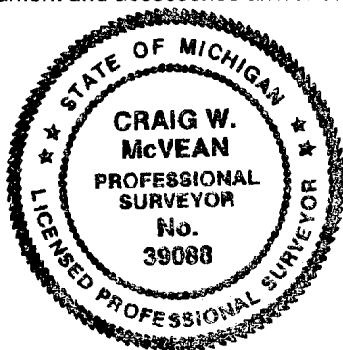
I, Craig W. McVean, in a field survey on Sept. 23, 2008 do hereby state that under requirements of PA 74, Michigan PA of 1970, the corner points mentioned in lines 1 and 2 above were in conformance with regulations and rules therefore as required in the current manual of survey instructions of the United States Department of the Interior, Bureau of Land Management or by a decree of a Court of Law and/or that the corner points mentioned in lines 3, 4 and 5 above were in conformance with the rules of the Michigan Board of Land Surveyors or by a Decree of a Court of Law; established, re-established, monumented, recovered, found as expressed below:

NOTE: Not more than 2 corners, all in the same town and range, may be recorded on this certificate.



A. Description of original monument and accessories and/or subsequent restoration:

11 - None



14 - **No date** - Unrecorded survey by Gourdie-Fraser. Shows set corner.

B. Description of corner evidence found and/or method applied in restoring or re-establishing corner:

11 - SW 1/16 Corner, Section 9 - Set stamped 2" Aluminum cap on 5/8" x 34" rebar per Standard BLM procedure. Centerline N-S 2-track is 14' E.

14 - S 1/16 Corner common to Sections 9 & 10 - Set a stamped 2" Aluminum Cap on 5/8" x 34" Rebar single proportion to GLO between GLO WPS Line Tree to South & calculated position for Meander corner #37 per GLO plat (now in river) to the North. S50°W 91.22' to fd. 1/2" rebar which appears to be the Gourdie-Fraser position.

C. Description of monument for corner and accessories established to perpetuate locating the position of the corner:

11 - Stamped 2" Aluminum Cap on 5/8" x 34" rebar
 N48°W 19.14' to set Nail & Tag on SW side 15" Red Pine
 S78°E 6.65' to set Nail & Tag on S. side 14" Red Pine
 S10°E 36.12' to set Nail & Tag on E. side 15" Red Pine
 S65°W 2.75' to set Nail & Tag on SE side 12" twin Red Pine
 Set Blue Carsonite Post with location tag 1' Northeast

14 - Stamped 2" Aluminum Cap on 5/8" x 34" rebar
 N07°E 25.70' to set Nail & Tag in W. side 14" Oak
 N43°W 44.29' to set Nail & Tag in SW side 8" Sugar Maple
 S45°W 26.09' to set Nail & Tag in SE side 13" Sugar Maple
 S57°E 45.27' to set Nail & Tag in NE side 16" Sugar Maple
 West 120.5' on S 1/16 line to 16" Red Maple line tree
 Set Blue Carsonite Post with location tag 1' Northwest
 S50°W 91.22' to fd. 1/2" rebar

Signed by: Craig W. McVean
 Surveyor's Michigan License No.: 39088

Date: 5/26/2009