

LAND CORNER RECORDATION CERTIFICATE
Filing Requirement of Act 74, Mich. PA 1970

For Corners In: Clare Located In _____ Corner Code # _____
(County)

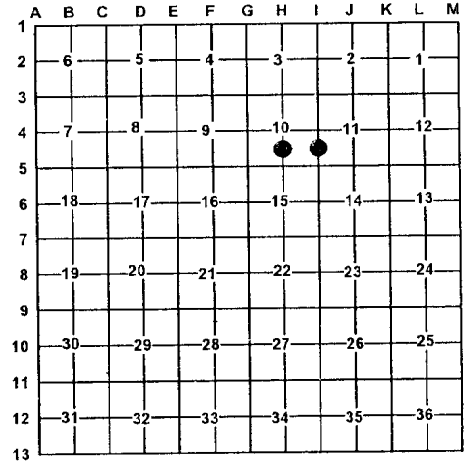
1. Public Land Survey	T _____	R _____	_____
	T _____	R _____	_____
2. Property Controlling in Section	S <u>10</u>	T <u>19N</u>	R <u>6W</u> <u>12</u>
	S <u>10</u>	T <u>19N</u>	R <u>6W</u> <u>14</u>
3. Miscellaneous Property in Section	S _____	T _____	R _____
	S _____	T _____	R _____

Register of Deeds Stamp & File Number

4. Lot No: _____ Recorded Plat: _____
5. Private Claims: _____

I, Craig W. McVean, in a field survey on Sept. 29, 2008 do hereby state that under requirements of PA 74, Michigan PA of 1970, the corner points mentioned in lines 1 and 2 above were in conformance with regulations and rules therefore as required in the current manual of survey instructions of the United States Department of the Interior, Bureau of Land Management or by a decree of a Court of Law and/or that the corner points mentioned in lines 3, 4 and 5 above were in conformance with the rules of the Michigan Board of Land Surveyors or by a Decree of a Court of Law; established, re-established, monumented, recovered, found as expressed below:

NOTE: Not more than 2 corners, all in the same town and range, may be recorded on this certificate.



A. Description of original monument and accessories and/or subsequent restoration:

12 - None.

14 - None.



B. Description of corner evidence found and/or method applied in restoring or re-establishing corner:

12 - CS 1/16 Corner, Section 10 - Set Stamped 2" Aluminum Cap on 5/8" x 34" rebar per Standard BLM Procedure. West 28'± to centerline of N-S gravel road.

14 - S 1/16 Corner, common to Sections 10 & 11 - Set stamped 2" Aluminum Cap on 5/8" x 6' rebar per Standard BLM procedure in marsh. Found N-S single strand wire fence 28' East of position, but is erratic and attached to trees.

C. Description of monument for corner and accessories established to perpetuate locating the position of the corner:

12 - Stamped 2" Aluminum Cap on 5/8" x 34" rebar
S68°W 67.31' to set nail & tag in N. side 8" Red Oak
N15°E 87.87' to set nail & tag in W. side 14" W. Pine
N52°E 55.01' to set nail & tag in SE side 11" W. Pine
S55°E 70.45' to set nail & tag in NE side 17" W. Pine
Set Blue Carsonite Post with location tag 1' Northeast

14 - Stamped 2" Aluminum Cap on 5/8" x 6' long rebar
S53°W 60.44' to set nail & tag in SE side 4" Tamarack
S21°E 47.32' to set nail & tag in W. side 3" W. Pine
S83°E 52.53' to set nail & tag in N. side 4" Tamarack
N17°W 79.90' to set nail & tag in E. side 4" W. Pine
Set Blue Carsonite Post with location tag 1' South

Signed by: Craig W. McVean
Surveyor's Michigan License No.: 39088

Date: 5/26/2009