

LAND CORNER RECORDATION CERTIFICATE

Filing Requirement of Act 74, Mich. PA 1970

For Corners In:

Clare Located In _____ Corner Code # _____
(County)

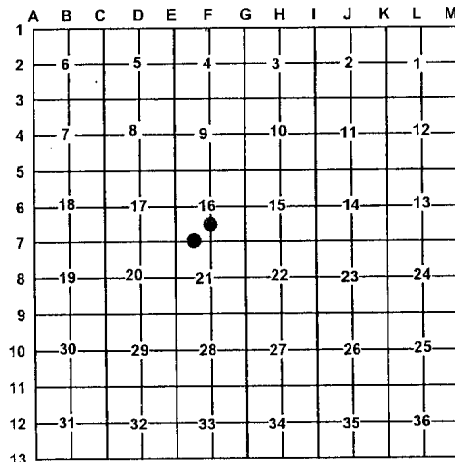
| | | | |
|--------------------------------------|-------------|--------------|-----------------------|
| 1. Public Land Survey | T _____ | R _____ | _____ |
| | T _____ | R _____ | _____ |
| 2. Property Controlling in Section | S <u>16</u> | T <u>19N</u> | R <u>6W</u> <u>12</u> |
| | S <u>16</u> | T <u>19N</u> | R <u>6W</u> <u>15</u> |
| 3. Miscellaneous Property in Section | S _____ | T _____ | R _____ |
| | S _____ | T _____ | R _____ |

Register of Deeds Stamp & File Number

4. Lot No: _____ Recorded Plat: _____

5. Private Claims: _____

I, Craig W. McVean, in a field survey on March 17, 2008 do hereby state that under requirements of PA 74, Michigan PA of 1970, the corner points mentioned in lines 1 and 2 above were in conformance with regulations and rules therefore as required in the current manual of survey instructions of the United States Department of the Interior, Bureau of Land Management or by a decree of a Court of Law and/or that the corner points mentioned in lines 3, 4 and 5 above were in conformance with the rules of the Michigan Board of Land Surveyors or by a Decree of a Court of Law; established, re-established, monumented, recovered, found as expressed below:



NOTE: Not more than 2 corners, all in the same town and range, may be recorded on this certificate.

A. Description of original monument and accessories and/or subsequent restoration:

- 12 – 1911 – CSR – A. D. Johnson
- 1) Elm 5" N85°E 15 L.
 - 2) Elm 5" S15°W 32 ½ L.
 - 1981 – Unrecorded Survey – Harrison Surveys #8109821 – J. W. Sedgman – Set ½" bar RLS cap
 - 1986 – LCRC #487 – 86 – C. F. Roser
Fd. ½" iron rod with RLS cap in 2" pipe per Sedgman. Add cedar post with loc. tag. Center 10' wide creek CNE'ly N. 248'
 - 3) 9" Maple N45°W 14.43'
 - 4) 5" Maple N60°E 12.04'
 - 5) 22" Maple S25°W 16.46'

- 15 – 1911 – CSR – A. D. Johnson
- 1) Aspen 8" N87°E 55 L.
 - 2) Aspen 5" S50°W 39 L.
 - 1986 – LCRC – C. F. Roser, PS #12028 – Set 5/8" x 34" rerod with RLS Cap and cedar post with loc. tag.
 - 3) W. Birch N70°E 28.4';
 - 4) 9" R. Oak S70°E 45.9';
 - 5) 6" B. Cherry in clp. – 2 S50°W 170.5';
W'ly edge of River East 173'

B. Description of corner evidence found and/or method applied in restoring or re-establishing corner:

- 12 – CS 1/16 Corner Sec. 16, T19N, R6W – No evidence of Johnson position. Set stamped 2" Alum. Cap on 5/8" x 34" rebar per Standard BLM procedure.

Reference Pt. – N3°W 11.57' from '12' to fd. ½" CIR #18664 per LCRC. Could not accept this CIR since it is based on rejected 'F7' position. ½" CIR not utilized as '12' in this survey.

- 15 – W. 1/16 Corner common to Sec. 16 & 21, T19N, R6W
No evidence of Johnson position found. Set stamped 2" Alum. Cap on 5/8" x 34" rebar per Standard BLM procedure by single proportion between 'E7' and Meander corner #35 per GLO plat. East ± 149' to top of bank at river.

Reference Pt. – Roser's iron has been removed. Based on BT #4 and calculation – Roser position is N1°41'W 11.6' from '15'. Roser used rejected position at 'F7' to set this removed position.

C. Description of monument for corner and accessories established to perpetuate locating the position of the corner:

- 12 – Stamped 2" Alum. Cap on 5/8" x 34" rebar.
S76°E 32.46' to set nail & tag on S. side 24" R. Maple
S32°E 43.37' to set nail & tag on NE side triple 14" R. Maple
S16°W 13.45' to set nail & tag on E. side 18" R. Maple
N28°W 24.69' to set nail & tag on W. side 14"± . Maple
N3°W 11.57' to found CIR #18664 – Ref. Pt.
Set Blue Carsonite Post with loc. tag 1' SE
Reset Cedar post with loc. tag 1' East

- 15 – Stamped 2" Alum. Cap on 5/8" x 34" rebar
N48°E 5.65' to set nail & tag on NW side 8" Elm
S88°E 44.42' to set nail & tag on N side 14" Oak (#4)
S35°E 8.64' to set nail & tag on NE side 7" Ash
N82°W 8.70' to set nail & tag on S side 3" Oak
Set Blue Carsonite Post with loc. tag 1' East
N1°41'W 11.6' to Ref. Pt. – No iron.

Signed by: _____

Craig W. McVean

Date: _____

5/26/2009

Surveyor's Michigan License No.: _____

39088

