

**LAND CORNER RECORDATION CERTIFICATE**  
 Filing Requirement of Act 74, Mich. PA 1970  
**REMONUMENTATION**

For Corners In:			
Clare	Located In		Corner Code #
(County)			
1. Public Land Survey	T <u>19N</u> R <u>6W</u>		<u>#3</u>
	T _____ R _____		_____
2. Property Controlling in Section	S _____ T _____ R _____		_____
	S _____ T _____ R _____		_____
3. Miscellaneous Property in Section	S _____ T _____ R _____		_____
	S _____ T _____ R _____		_____

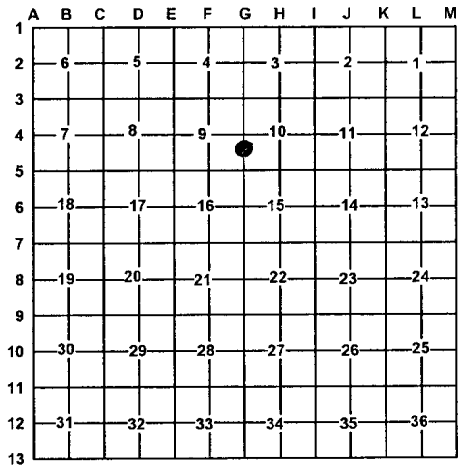
Register of Deeds Stamp & File Number

4. Lot No: \_\_\_\_\_ Recorded Plat: \_\_\_\_\_

5. Private Claims: \_\_\_\_\_

I, Craig W. McVean, in a field survey on Sept. 25, 2008 do hereby state that under requirements of PA 74, Michigan PA of 1970, the corner points mentioned in lines 1 and 2 above were in conformance with regulations and rules therefore as required in the current manual of survey instructions of the United States Department of the Interior, Bureau of Land Management or by a decree of a Court of Law and/or that the corner points mentioned in lines 3, 4 and 5 above were in conformance with the rules of the Michigan Board of Land Surveyors or by a Decree of a Court of Law; established, re-established, monumented, recovered, found as expressed below:

**NOTE: Not more than 2 corners, all in the same town and range, may be recorded on this certificate.**



A. Description of original monument and accessories and/or subsequent restoration:

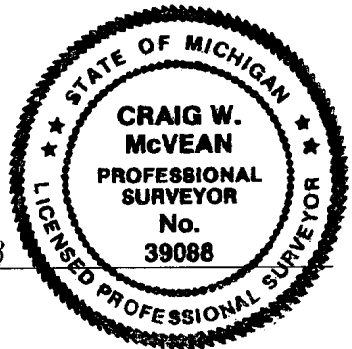
**#3 (MC-37) – 1856 – F. Coleman – GLO Resurvey**  
 S1°20'E Corr. between Secs. 9 & 10  
 54.57 over river by offset and measurement  
 on random and set meander post 8L. S of old one.  
 Bank being washed away.  
 1) Sugar 6" N52°W 12 L.  
 2) Sugar 6" S67°E 20 L.  
 Thence South  
 71.00 W. Pine 18" dia.  
 80.00 Section Corner

B. Description of corner evidence found and/or method applied in restoring or re-establishing corner:

**#3 (MC-37) – Meander Corner #37** per GLO plat being 54.57 Ch. South of 'G3' on line between Sections 9 and 10 and on the left bank of Muskegon River and also being deflection point in Section Line. Left (Southerly) Bank of river being eroded in this area and position for Meander Corner is now in the river. Calculated position of Meander corner post by single proportion to GLO between 'G3' and recovered GLO 18" White Pine Line Tree stump to South at record GLO Geodetic bearing of North from Line Tree. Measured the following grid bearing and distance from "MC-37" – S0°28'02"W 1079.74' (South 1084.38' – GLO) to set 2" Alum. Cap on 5/8" x 34" rebar in centerline of 18" WPS – Line Tree; S0°28'02"W 1677.92' (South 1678.38' – GLO) to 'G5' and N0°42'35"W 3586.22' (N1°20'W 3601.62' – GLO) to 'G3'. Calculated position of Meander corner accepted as a careful and faithful reestablishment of the position of the original corner.

C. Description of monument for corner and accessories established to perpetuate locating the position of the corner:

**#3 (MC-37) – Calculated Meander Corner position in Muskegon River**  
 S0°28'02"W 71.00' to POL on left bank of river – 2" Alum. Cap on 5/8" x 34" rebar  
 S0°28'02" W 356.85' to S 1/16 common to Sec. 9 & 10 – 2" Alum. Cap on 5/8" x 34" rebar  
 N0°42'35"W 136.04' (136.62' – GLO) to 'MC-18' on right bank of river – 2" Alum. Cap on 5/8" x 34" rebar  
 N0°42'35"W 957.51' (961.62' – GLO) to 'G4' – DNR Monument



Signed by: Craig W. McVean  
 Surveyor's Michigan License No.: 39088

Date: 10/20/2008