

MICHIGAN
DEPARTMENT OF CONSERVATION
FORESTRY DIVISION

LAND CORNER RECORD

T. 20 N.R. 4 W

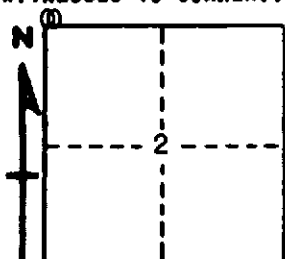
Clare COUNTY

DESCRIPTION OF CORNER Section corner common to Sections 2 and 3 on N. Boundary of Twp.

CORNER MONUMENT Set 1" pipe with 1/4" Aluminum cap

DATE MONUMENT PLACED AND WITNESSED June 9, 1966

WITNESSES TO CORNER.....



CIRCLE CORNER REGISTERED

Stream edge west 16'

Stream edge South 66'

AND

Nothing else near

DESCRIPTION IN DETAIL AS TO HOW CORNER WAS LOCATED AND IDENTIFIED OR RESTORED.

This corner was set during a survey of the 2nd correction line through this township. Set corner at U.S. record, 6.80 chs, east of the standard corner common to Sec. 34-35 on south boundary of T21N R4W which was positively identified. Found nothing for previous corner, but this point fits stream crossings west and south.

SURVEYOR'S SEAL

SIGNED Kenneth J. Ostling DATE June 9, 1966
REGISTERED LEAD SURVEYOR #10068