

MICHIGAN
DEPARTMENT OF CONSERVATION
FORESTRY DIVISION

LAND CORNER RECORD

T. 20 N N.R. 3 W ✓
T. 20 N N.R. 4 W

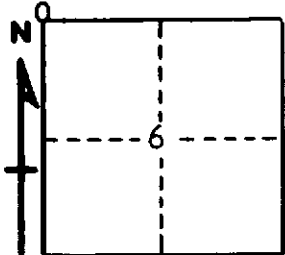
Clare COUNTY

DESCRIPTION OF CORNER Town corner common to sections 6-1 on 2nd correction line

CORNER MONUMENT Set 1" pipe with 4" Aluminum cap

DATE MONUMENT PLACED AND WITNESSED June 22, 1966

WITNESSES TO CORNER.....



* 36"x30' W. Pine Stub S 8 W 68.4'

7" S. Maple S 32 E 47.2'

AND

CIRCLE CORNER REGISTERED

DESCRIPTION IN DETAIL AS TO HOW CORNER WAS LOCATED AND IDENTIFIED OR RESTORED.

This corner was established on the 2nd correction line at U.S. record measurement east of standard township corner to T21N, R 3 and 4 W, which is 8.35 chs west. A 1/2" pipe is located about 75' south of the corner, but appears to have been set without benefit of a retracement of the correction line.

* This stub has what appears to be a very old witness face, which exactly faces our corner.

SURVEYOR'S SEAL

SIGNED *Kenneth J. Osting* DATE June 22, 1966
REGISTERED LAND SURVEYOR #10068