

**LAND CORNER RECORDATION CERTIFICATE**  
**Filing Requirement of Act 74, Mich. P.A. 1970**

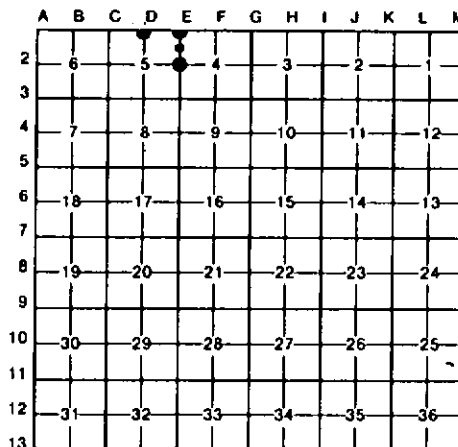
For corners in

<u>CLARE</u> (County)	Located In:	Corner Code =#
1. Public Land Survey	T <u>20N</u> R <u>4W</u>	<u>E-1</u>
	T _____ R _____	<u>E-2</u>
	T _____ R _____	<u>D-1</u>
	T _____ R _____	
2. Property Controlling in Section	S <u>5</u> T _____ R _____	<u>7</u>
	S _____ T _____ R _____	
3. Miscellaneous Property in Sec.	S _____ T _____ R _____	
	S _____ T _____ R _____	

Register of Deeds Stamp & File Number

4. Lot No. \_\_\_\_\_, Recorded Plat \_\_\_\_\_  
 5. Private Claims \_\_\_\_\_

I, CARL F. ROSER, in a field survey on MARCH 3, 19 88, do hereby certify that under requirements of P.A. 74, Michigan P.A. of 1970, the corner points mentioned in lines 1 and 2 above were in conformance with regulations and rules therefore as required in the current manual of survey instructions of the United States Department of the Interior, Bureau of Land Management or by a decree of a Court of Law and/or that the corner points mentioned in lines 3, 4 and 5 above were in conformance with the rules of the Michigan Board of Land Surveyors or by a Decree of a Court of Law; established, re-established, monumented, re-monumented, recovered, found as expressed below:



**NOTE:** Not more than 4 corners, all in the same town and range, may be recorded on this certificate.

A. Description of original monument and accessories and/or subsequent restoration:

E-1	E-2	7	D-1
-----	-----	---	-----

B. Description of corner evidence found and/or method applied in restoring or reestablishing corner:

<b>E-1</b>	<b>E-2</b>	<b>7</b>	<b>D-1</b>
RE-ESTAB #NE COR S-5 PRORATED TO GLO; ON LINE BETN SW & S1/4 COR OF S-33, T21N-R4W. *CLOSING CORNER ON MICH SECOND CORRECTION LINE.	RE-ESTAB E 1/4 S-5 PER STD BLM INSTRUCTIONS PRORATED TO GLO (U.S.-1856) SURVEY BETN SEC'S 4 & 5; RUNOUT SEC ON MICH SECOND CORRECTION LINE. N'LY END OF OLD N-S FM REMAINS IS S'LY 175'± & WEST 28'±. COR FALLS IN WILLOW SWP; DROVE PIPE THROUGH 8" OF ICE & INTO MUCK. TOP MON 1.5' ABOVE ICE.	ESTAB'D NE COR OF SE 1/4 OF FRL NE 1/4 OF S-5; PER STD BLM INSTRUCTIONS. RUNOUT SEC ON MICH 2ND CORR. LINE; PROPORTIONATE MEA. (PRORATED) TO GLO PLAT. COR FALLS IN OPEN & TAG ALDER SWP. 18" OF ICE OVER MUCK & SILT.	ESTAB'D N 1/4 COR S-5, EQUIDISTANT BETN NE & NW COR'S OF S-5; & ON LINE BETN SE & S 1/4 COR'S OF S-32, T21N-R4W. E-W RANDOM LINE IS 3.3' NORTH.

C. Description of monument for corner and accessories established to perpetuate locating the position of the corner:

<b>E-1</b>	<b>E-2</b>	<b>7</b>	<b>D-1</b>
PUSHED IN 1" X 7' GALV PIPE W/STD DNR CAP; SET CED POST. 6" CEDAR N70°E 3.8' 5" CEDAR S26°E 12.0' 6" CEDAR S26°W 17.5' 4" TAMARACK S85°W 22.5' SE COR S-32 T21N-R4W N88°46'W 446.12' E-W RANDOM LINE DUE S 5.0'	DROVE 1" X 8' GALV PIPE W/STD DNR CAP; SET CED POST. N-S RANDOM LINE DUE W 23.2' 12" MAPLE CLUMP (7) S60°W 94.4' 7" MAPLE DUE N 111.7' S'LY EDGE WILLOW & ALDER SWP. DUE S 426'±30' NO OTHER WITS AVAILABLE.	PUSHED IN 1" X 7' GALV PIPE W/RLS CAP; SET CED POST W/LOC TAG. 6" MAPLE S55°E 33.4' 6" CEDAR N15°E 121.6' N'LY EDGE CREEK DUE S 100'±4' E'LY EDGE CREEK DUE W 123'±4'	PUSHED IN 1" X 7' GALV PIPE W/STD DNR CAP; SET CED POST. 2" B SPRUCE S80°W 7.8' 5" TAMARACK N60°W 8.5' 4" TAMARACK S55°E 7.2' 4" TAMARACK S25°E 6.1' S 1/4 S-32 T21N-R4W N89°10'W 441.9'

Signed by Carl F. Roser 11-14-91 Date

Surveyor's Michigan License No. 12028

