

LAND CORNER RECORDATION CERTIFICATE
Filing Requirement of Act 74, Mich. P.A. 1970

For corners in
CLARE

(County)

Located In:

Corner Code ##

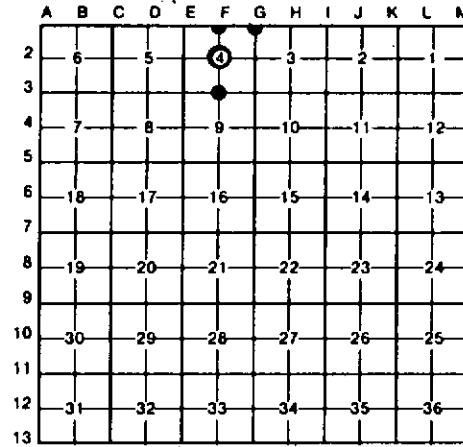
1. Public Land Survey	T <u>20N</u> R <u>4W</u>	F-1
	T _____ R _____	F-2
	T _____ R _____	F-3
	T _____ R _____	G-1
2. Property Controlling in Section	S _____ T _____ R _____	
	S _____ T _____ R _____	
3. Miscellaneous Property in Sec.	S _____ T _____ R _____	
	S _____ T _____ R _____	

Register of Deeds Stamp & File Number

4. Lot No. _____, Recorded Plat _____
 5. Private Claims _____

I, CARL F. ROSE, in a field survey on JUNE 23, 19 88, do hereby certify that under requirements of P.A. 74, Michigan P.A. of 1970, the corner points mentioned in lines 1 and 2 above were in conformance with regulations and rules therefore as required in the current manual of survey instructions of the United States Department of the Interior, Bureau of Land Management or by a decree of a Court of Law and/or that the corner points mentioned in lines 3, 4 and 5 above were in conformance with the rules of the Michigan Board of Land Surveyors or by a Decree of a Court of Law; established, re-established, monumented, re-monumented, recovered, found as expressed below:

NOTE: Not more than 4 corners, all in the same town and range, may be recorded on this certificate.



A. Description of original monument and accessories and/or subsequent restoration:

F-1	F-2	F-3	G-1
ESTAB W 1/4 COR OF S-4 EQUIDISTANT BETW NE & NW COR'S OF S-4; AND ON LINE BETW THE S 1/4 COR & SE COR OF S-33, T21N-R4W. COR FALLS IN S/WP IN 14" OF FROZEN WATER; DROVE PIPE INTO HARD PAN (TOP MON IS 2' ABOVE FROZEN WATER).	ESTAB CTR OF S-4 AT INTERSEC OF 1/4 LINES PER STD BLN INSTRUCTIONS. FD PIECES OF SMOOTH WIRE, IN GROUND TO N, 3' E OF COR. CTR OF S BOUND US-27 IS E 200' (±10').	ACCEPT 1" IRON FOR S 1/4 COR S-4. COR FITS TWO (1958) MSHD WITS. CTR OF SOUTH BOUND US-27 IS 105'± EAST; COR FALLS 1'± WEST OF N'LY HIGHWAY R.O.W. FENCE.	RESTORED CLOSING COR TO SEC'S 3 & 4 ON N LINE OF T20N-R4W (MICH SECOND CORR LINE) FROM THREE 1958 M.S.H.D. WITS. JERRY SEWARD, MSHD SURVEY CHIEF, SAYS "FOUND WOOD HUB, REPLACED WITH 3/4" IRON ROD". WE FD 1 1/8" X 24" ROUND IR (WITH 1/2" HOLE) LYING ON TOP GROUND 25'± EAST. COR IS IN LINE WITH FN REMAINS TO W. CTR N-S TRAIL IS 78'± EAST.

C. Description of monument for corner and accessories established to perpetuate locating the position of the corner:

F-1	F-2	F-3	G-1
DR 1" X 8" GALV PIPE W/STD DNR CAP; SET CED POST.	DR 1" X 42" PIPE W/RLS CAP & SET CED POST W/LOC TAG.	FD 1" X 12" TAPERED IR, REPLACED W/DNR MON & SET CED POST.	SET DNR MON FROM 3 MSHD WITS.
8" BALSAM N45°W 59.0'	11" MAPLE N24°E 36.4'	4" MAPLE N12°W 23.87'	12" W OAK N42°E 12.58'
4" MAPLE N15°W 38.9'	3" MAPLE S50°E 33.3'	5" MAPLE S40°W 9.50'	+20" B OAK S64°E 49.71'
4" MAPLE N40°E 26.0'	4" OAK S86°W 9.4'	11" ASH S44°E 9.27'	10" W PINE S40°W 16.70'
6" MAPLE S85°W 52.8'	3" OAK N32°W 14.5'	4" OAK N60°E 12.01'	+13" B OAK N34°W 30.26'
N EDGE S/WP DUE W 100'±5'			SE COR S-33 T21N-R4W
E EDGE S/WP DUE E 380'±			N89°58'W 450.09'
S 1/4 S-33 T21N-R4W			
N89°58'W 446.0'			

*MSHD WITS (WE DROVE NEW SIDE NAILS).

Signed by Carl F. Rose 11-14-91 Date _____
 Surveyor's Michigan License No. 12028

FORM APPROVED BY MICHIGAN STATE BOARD OF LAND SURVEYORS, JAN. 28, 1971
 REVISOR, MAR. 14, 1975
 REVISOR, JAN., 1983



Clare County