

**LAND CORNER RECORDATION CERTIFICATE**  
**Filing Requirement of Act 74, Mich. P.A. 1970**

For corners in  
CLARE

(County)

Located In:

Corner Code ~~##~~

1. Public Land Survey	T	<u>20N</u>	R	<u>4W</u>	<u>J-3</u>
	T		R		<u>I-3</u>
	T		R		
	T		R		
2. Property Controlling in Section	S		T		R
	S		T		R
3. Miscellaneous Property in Sec.	S		T		R
	S		T		R

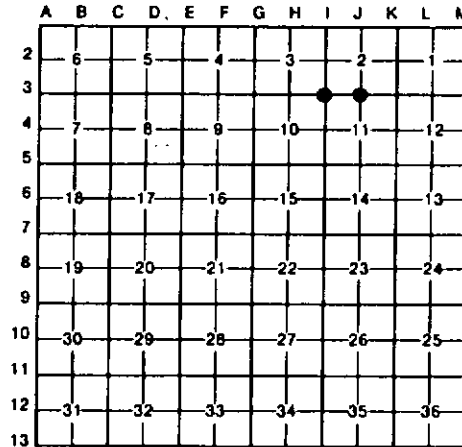
Register of Deeds Stamp & File Number

4. Lot No. \_\_\_\_\_, Recorded Plat \_\_\_\_\_  
 5. Private Claims \_\_\_\_\_

I, CARL F. ROSER, in a field survey on NOVEMBER 14, 19 88, do hereby certify that under requirements of P.A. 74, Michigan P.A. of 1970, the corner points mentioned in lines 1 and 2 above were in conformance with regulations and rules therefore as required in the current manual of survey instructions of the United States Department of the Interior, Bureau of Land Management or by a decree of a Court of Law and/or that the corner points mentioned in lines 3, 4 and 5 above were in conformance with the rules of the Michigan Board of Land Surveyors or by a Decree of a Court of Law; established, re-established, monumented, re-monumented, recovered, found as expressed below:

**NOTE: Not more than 4 corners, all in the same town and range, may be recorded on this certificate.**

A. Description of original monument and accessories and/or subsequent restoration:  
J-3 I-3



B. Description of corner evidence found and/or method applied in restoring or reestablishing corner:

<u>J-3</u> FD "STATE OF MICH" BRONZE CAP MON ON PIPE, AS SET BY RLS W.S. MOORE (RLS #7870, NOW DECEASED) IN 1957. COR FALLS AT INTERSEC OF SMOOTH WIRE & CABLE WIRE FN'S, N-S-E-W. FD ALUM DNR COR LOC TAG ON CED POST ABOUT 8' N; PROBABLY SET BY FORESTER.	<u>I-3</u> FD "STATE OF MICH" BRONZE CAP ON PIPE (FLUSH) ON W SIDE OF LG, NEW CED POST. BRONZE CAP MON STAMPED #7874, 1957 PER RLS W.S. MOORE (RLS-NOW DECEASED).
---	--

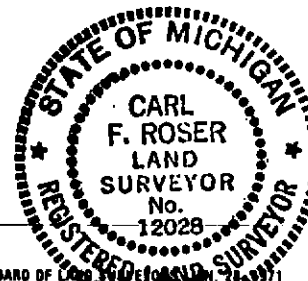
C. Description of monument for corner and accessories established to perpetuate locating the position of the corner:

<u>J-3</u> FD STATE OF MI BRONZE CAP MON #14° OAK N80°W 57.38' 14° B CHERRY N60°E 19.76' POWER POLE S60°E 36.58' #19° OAK S07°W 49.27' CTR E-W TRAIL DUE S 37'43'	<u>I-3</u> FD STATE OF MI BRONZE CAP MON & NEW LARGE CED FN POST. #22° TW OAK S80°E 27.32' #24° OAK N20°W 41.68' #23° OAK S75°W 76.44' 3° OAK S20°W 9.08'
---	--

#EQUALS RLS H. FLUHARTY 1987  
 WITS.

#EQUALS RLS H. FLUHARTY WITS.

Signed by Carl F. Roser 11-14-91 Date \_\_\_\_\_  
 Surveyor's Michigan License No. 12028



*Clare County*