

MICHIGAN
DEPARTMENT OF CONSERVATION
FORESTRY DIVISION

LAND CORNER RECORD

T. 20 N.R. 5 W

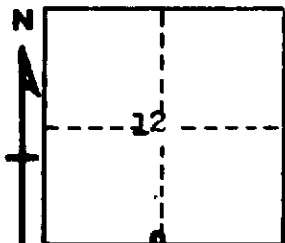
Clare COUNTY

DESCRIPTION OF CORNER 1/4 corner common to Sections 12-13

CORNER MONUMENT Left 1 1/2" pipe in place, 2' above ground

DATE MONUMENT PLACED AND WITNESSED 10/19/62

WITNESSES TO CORNER.....



8" J. Pine	-	S75W	-	23.3 ft
7" J. Pine	-	S34E	-	25.1 ft

AND

CIRCLE CORNER REGISTERED

DESCRIPTION IN DETAIL AS TO HOW CORNER WAS LOCATED AND IDENTIFIED OR RESTORED.

This corner was found while making a corner search in this township. Found 1 1/2" pipe at corner as restored by Marcus Schaaf, RLS, in 1940. SW J. Pine USBT in place, dead, but with both faces and scribe marks plain. Very good original corner.

SURVEYOR'S SEAL

SIGNED *Kenneth J. Osting* DATE 11/7/62
REGISTERED LAND SURVEYOR