

LAND CORNER RECORDATION CERTIFICATE
Filing Requirement of Act 74, Mich. P.A. 1970

For corners in
CLARE
 (County)

Located In:	Corner Code ##
1. Public Land Survey	T <u>20N</u> R <u>5W</u>
	T _____ R _____
	T _____ R _____
	T _____ R _____
2. Property Controlling in Section	S _____ T _____ R _____
	S _____ T _____ R _____
3. Miscellaneous Property in Sec.	S <u>13</u> T _____ R _____
	S <u>13</u> T _____ R _____
	USMC 537' E of K-7
	USMC 1267' W of L-7
4. Lot No. _____, Recorded Plat _____	
5. Private Claims _____	

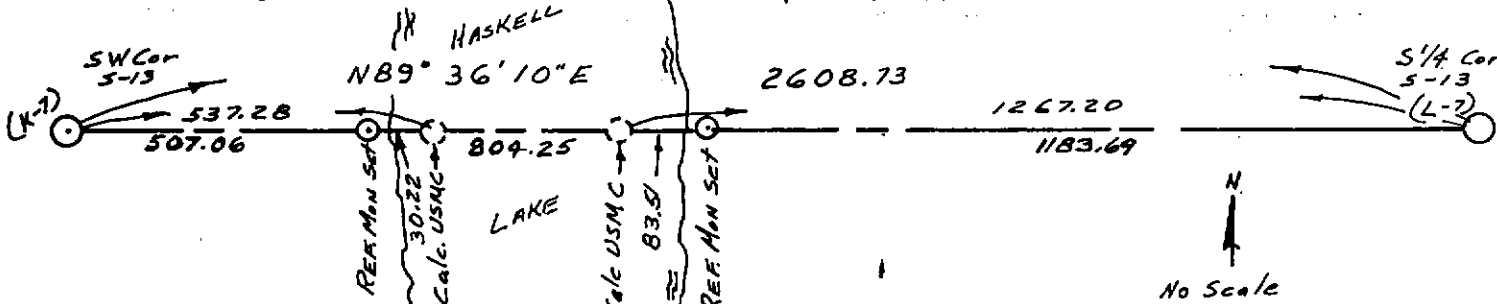
Register of Deeds Stamp & File Number

A	B	C	D	E	F	G	H	I	J	K	L	M
2	6	5	4	3	2	1						
3												
4	7	8	9	10	11	12						
5												
6	16	17	16	15	14	13						
7												
8	19	20	21	22	23	24						
9												
10	30	29	28	27	26	25						
11												
12	31	32	33	34	35	36						
13												

I, C.F. ROSER, in a field survey on MAY 1, 19 91, do hereby certify that under requirements of P.A. 74, Michigan P.A. of 1970, the corner points mentioned in lines 1 and 2 above were in conformance with regulations and rules therefore as required in the current manual of survey instructions of the United States Department of the Interior, Bureau of Land Management or by a decree of a Court of Law and/or that the corner points mentioned in lines 3, 4 and 5 above were in conformance with the rules of the Michigan Board of Land Surveyors or by a Decree of a Court of Law; established, re-established, monumented, re-monumented, recovered, found as expressed below:

NOTE: Not more than 4 corners, all in the same town and range, may be recorded on this certificate.

A. Description of original monument and accessories and/or subsequent restoration:



B. Description of corner evidence found and/or method applied in restoring or reestablishing corner:

USMC 537' E. of K-7 CALC. POSITION FOR U.S.M.C. ON THE WEST SIDE OF HASKELL LAKE (LAKE HIGH-CALC. POSITION FALLS IN LAKE); IF PHYSICAL POINT WERE SET, COULD BE DANGEROUS TO BOATERS OR SWIMMERS, NO POINT SET. SET REFERENCE MONUMENT TO CALC. PROP. MEA. U.S.M.C., S89°36'W, 30.22'. CALC. POSITION FOR U.S.M.C., ON W. SIDE OF HASKELL LAKE, IS AT PROP. MEA.	USMC 537' E. of K-7 TO B.L.O. BETWEEN SW S-13 AND CALC POSITION FOR USMC ON E SIDE OF HASKELL LAKE, AND ON LINE BET. SW AND S1/4 COR OF SEC 13; SAID CALC POSIT. FOR USMC BEING N89°36'10"E, 537.28'-CALC, FROM SW COR OF S-13.	USMC 1267' W. of L-7 CALC. POSITION FOR U.S.M.C. ON EAST SIDE OF HASKELL LAKE (LAKE HIGH-CALC POSITION FALLS IN LAKE); IF PHYSICAL POINT WERE SET, COULD BE DANGEROUS TO BOATERS OR SWIMMERS, NO POINT SET. SET REFERENCE MONUMENT TO CALC POSITION U.S.M.C., N89°36'E, 83.51'. CALC POSITION FOR USMC ON EAST SIDE OF HASKELL LAKE, IS AT RECORD B.L.O. DISTANCE WEST OF	USMC 1267' W. of L-7 S1/4 COR OF S-13, AND ON LINE BET SW AND S1/4 COR OF S-13. THIS METHOD OF RESTORATION BEST FITS USMC POSITION'S FOR HASKELL LAKE, AND PUTS 31' SHORTAGE OF HALF MILE, BETWEEN USMC E. SIDE OF LAKE AND SW S-13.
--	---	---	--

C. Description of monument for corner and accessories established to perpetuate locating the position of the corner:

USMC 537' E. of K-7 REF MON TO CALC. USMC IN LAKE. DROVE 5/8" x 34" REROD W/LS CAP AT REF MON POSITION. WIT TO REF MON. CALC POSITION FOR USMC N89°36'E 30.22' SW COR OF SEC 13. S89°36'10"W 507.06' 6" MAPLE (CLUMP) N25°W 11.32' 5" R. OAK S15°E 26.92'	USMC 537' E. of K-7 9" MAPLE S10°W 26.63' W'LY EDGE WATER EAST 11' CTR OF TRAIL RD (LOOKING WEST) SOUTH 5'	USMC 1267' W. of L-7 REF MON TO CALC USMC IN LAKE. DROVE 5/8" x 34" REROD W/LS CAP AT REF MON POSIT. (BURIED 13"). WIT TO REF MON. CALC POSITION FOR USMC S89°36'W 83.51' S1/4 CORNER OF SEC 13. N89°36'10"E 1183.69' 9" OAK N20°W 36.29' 10" OAK N40°E 35.08'	USMC 1267' W. of L-7 6" OAK SOUTH 31.25' E'LY EDGE WATER. WEST 61' CTR SAND RD (LOOKING EAST) SOUTH 10'
---	--	--	---

Signed by Carl F. Roser Date 02-24-92
 Surveyor's Michigan License No. 12028

