

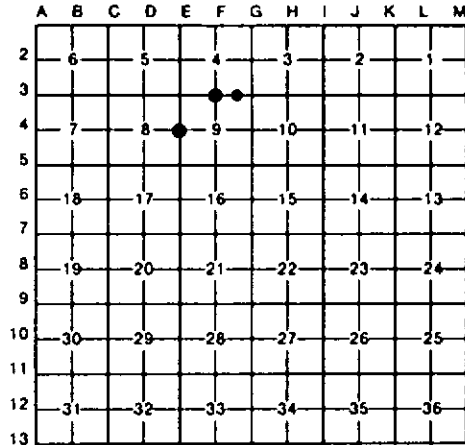
**LAND CORNER RECORDATION CERTIFICATE**  
**Filing Requirement of Act 74, Mich. P.A. 1970**

For corners in

<u>CLARE</u> (County)	Located In:	Corner Code <del>##</del>
1. Public Land Survey	T <u>20N</u> R <u>5W</u>	<u>E-4, F-3</u>
	T _____ R _____	_____
	T _____ R _____	_____
	T _____ R _____	_____
2. Property Controlling in Section	S <u>4</u> T _____ R _____	<u>16</u>
	S _____ T _____ R _____	_____
3. Miscellaneous Property in Sec.	S _____ T _____ R _____	_____
	S _____ T _____ R _____	_____

Register of Deeds Stamp & File Number

4. Lot No. \_\_\_\_\_, Recorded Plat \_\_\_\_\_  
 5. Private Claims \_\_\_\_\_



I, CARL F. ROSER, in a field survey on JULY 3, 19 90, do hereby certify that under requirements of P.A. 74, Michigan P.A. of 1970, the corner points mentioned in lines 1 and 2 above were in conformance with regulations and rules therefore as required in the current manual of survey instructions of the United States Department of the Interior, Bureau of Land Management or by a decree of a Court of Law and/or that the corner points mentioned in lines 3, 4 and 5 above were in conformance with the rules of the Michigan Board of Land Surveyors or by a Decree of a Court of Law; established, re-established, monumented, re-monumented, recovered, found as expressed below:

**NOTE: Not more than 4 corners, all in the same town and range, may be recorded on this certificate.**

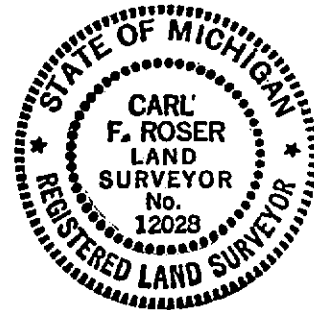
~~A. Description of original monument and accessories and/or subsequent restoration:~~

<b>E-4</b>	<b>F-3</b>	<b>14</b>
(B. CONTINUED) FD 3/4" PIPE (POSS RD PI) WAS FD BY RLS. M. McCLUNG IN HIS SUB'N FOR NE 1/4 OF S-9 (BOBUS GOVT COR). K. OSTLING, DEPT SUR (NOW DECEASED), FD THIS 3/4" PIPE; HE ALSO FD & TIED CO. SUR A. JOHNSON 1914 1/2" ROD (SEE KJO 1962 SUR MAP & REPORT OF S-16.	(B. CONTINUED) NW S-9 & FD NE S-9 (MM ALSO USED SAME FD NE S-9). THIS REESTAB'D N 1/4 COR OF S-9 DOES IMPACT ON CERT OF SURVEY'S OF NE 1/4 OF S-9 BY MATT McCLUNG AS RECORDED IN LIBER 2. PGS 641, 783 & 834. CTR OF E-W ABANDONED TRAIL IS 7'N.	
B. Description of corner evidence found and/or method applied in restoring or reestablishing corner:		

<b>E-4</b>	<b>F-3</b>	<b>14</b>
FD 1/2" REROD THAT FITS A. JOHNSON 1914 SUR FOR E 1/4 COR S-8. FD CLUMP OF 4 LIVE OAKS & ONE DEAD 16" STUMP THAT FITS A. JOHNSON 1914 MIT, OAK 12" N65°30'W 63 LKS (41.6'). NE NEAS N65°W 41.5' TO CTR OF CLP. FD 3/4" PIPE (POSS RD PI) S06°15'E, 99.86'. CTR N-S DIRT RD IS 5'E. CTR E-SW BRVL RD (IN CURVE) IS S 113'±. THE ABOVE	REESTAB N 1/4 COR OF S-9 WITHIN 12.99' FOR LAT & 0.13' FOR DEP OF M. McCLUNG N 1/4 COR S-9 (SET IN ERROR-SEE W 1/4 COR & NW COR OF S-9); OR CLOSE TO S.P. POSITION. COR ACTUALLY REESTAB BY HOLDING FD S 1/4 S-9 (ALSO USED BY M.M.) & PROJECTING N-S 1/4 LINE THROUGH M.M.'S N 1/4 COR S-9. & INTERSECTING WITH OUR D.P. (CONTINUED IN "A")	ESTABLISHED SE COR OF SW 1/4 OF SE 1/4 OF SEC 4 MIDWAY & ON LINE BETWEEN FD SE COR OF S-4 (SAME COR AS USED BY M. McCLUNG) & OUR S 1/4 COR OF S-4 (NOT SAME COR AS SET BY M.M.). CTR OF E-W TRAIL IS 16'N.

C. Description of monument for corner and accessories established to perpetuate locating the position of the corner:

<b>E-4</b>	<b>F-3</b>	<b>14</b>
DROVE 1" X 24" GALV PIPE W/RLS CAP OVER FD 1/2" X 12" REROD. 13" OAK N65°W 39.7' 12" OAK N40°E 42.4' 7" W PINE N70°E 78.0' 16" OAK S35°E 39.2' SET CED POST W/ LOC TAG. WEST 33'	SET DNR MON & CED POST. 12" R PINE N20°W 17.2' 16" R PINE S20°E 19.4' 15" R PINE SOUTH 31.0' 12" R PINE S45°W 41.3' FD 3/4" X 20" IR ROD W/RLS CAP #13037 S00°34'E 13.0'	DR 5/8" X 34" REROD W/RLS CAP; SET CED POST W/LOC TAG. 17" R PINE S75°W 29.7' 12" R PINE N75°W 29.3' 13" R PINE N35°W 44.4' FD 5/8" IR W/RLS CAP #13037 S02°24'E 6.22'



Signed by Carl F. Roser 5-22-92 Date \_\_\_\_\_

Surveyor's Michigan License No. 12028