

**LAND CORNER RECORDATION CERTIFICATE**  
**Filing Requirement of Act 74, Mich. P.A. 1970**

For corners in  
CLARE  
(County)

Located In: \_\_\_\_\_ Corner Code ~~##~~

1. Public Land Survey      T 20N R 5W      C-3, D-3  
                                   T \_\_\_\_\_ R \_\_\_\_\_      E-2, E-3  
                                   T \_\_\_\_\_ R \_\_\_\_\_  
                                   T \_\_\_\_\_ R \_\_\_\_\_

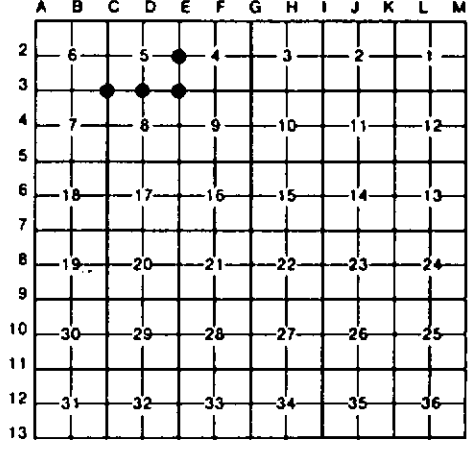
2. Property Controlling    S \_\_\_\_\_ T \_\_\_\_\_ R \_\_\_\_\_  
 in Section                   S \_\_\_\_\_ T \_\_\_\_\_ R \_\_\_\_\_

3. Miscellaneous           S \_\_\_\_\_ T \_\_\_\_\_ R \_\_\_\_\_  
 Property in Sec.           S \_\_\_\_\_ T \_\_\_\_\_ R \_\_\_\_\_

4. Lot No. \_\_\_\_\_, Recorded Plat \_\_\_\_\_

5. Private Claims \_\_\_\_\_

Register of Deeds Stamp & File Number



I, CARL F. ROSER, in a field survey on JULY 25, 19 90, do hereby certify that under requirements of P.A. 74, Michigan P.A. of 1970, the corner points mentioned in lines 1 and 2 above were in conformance with regulations and rules therefore as required in the current manual of survey instructions of the United States Department of the Interior, Bureau of Land Management or by a decree of a Court of Law and/or that the corner points mentioned in lines 3, 4 and 5 above were in conformance with the rules of the Michigan Board of Land Surveyors or by a Decree of a Court of Law; established, re-established, monumented, re-monumented, recovered, found as expressed below:

**NOTE: Not more than 4 corners, all in the same town and range, may be recorded on this certificate.**

A. Description of original monument and accessories and/or subsequent restoration:

<b>C-3</b>	<b>D-3</b>	<b>E-2</b>	<b>E-3</b>
FD N. SCHAAF 2" PIPE (& 3 NITS) FOR NE COR SEC 7. CTR OF N-S SAND TRAIL IS 21' ± E. COR WITNESSED AND USED BY OTHERS.	REESTABLISHED S 1/4 COR SEC 5 MIDWAY & ON LINE BETWEEN SEC COR'S 1/2 MILE E & W. CTR OF WINDING SAND TRAIL IS 47'E AND 38'S.	REESTABLISHED W 1/4 COR SEC 4 BY PROPORTIONATE MEAS TO U.S. (GLO. RUN-OUT SEC) BETW FD SEC COR TO N & AND REESTABLISHED D.P. SEC COR 1/2 MILE SOUTH. A MARCUS SCHAAF (1938±) POSITION FOR 1/4 COR. PER ONE OF HIS N.B.T'S. (WIT STUMP). NO PHYSICAL COR FD, WOULD BE 6' (±2') NORTH.	REESTAB'D NE COR S-8 PER PROP MEAS TO US (1 MI N. 1/2 MILE S. & 1 MILE E & W). CTR OF N-S DIRT RD IS 140' ± WEST. THE FD 5/8" ROD BY RLS. MATT MCCLUNG. WAS DISREGARDED SINCE MATT'S COR WAS ALSO ESTAB BY PROP MEAS; BUT HIS 1/4 COR, 1/2 MILE SOUTH, TURNED OUT TO BE 100' ± OFF IN LAT (POSSIBLE ROAD PI); SEE OUR COR RECORD FOR E 1/4 COR OF S-8 (E-4).

C. Description of monument for corner and accessories established to perpetuate locating the position of the corner:

<b>C-3</b>	<b>D-3</b>	<b>E-2</b>	<b>E-3</b>
DROVE 1" X 5' GALV PIPE W/ALUM DNR CAP IN FD RUSTY 2" PIPE & SET CED POST. 6" R PINE      N35°W    11.7' 6" R PINE      N50°E    3.8' 4" R PINE      S20°E    6.3' 6" R PINE      S80°W    20.0'	SET DNR MON & CED POST. 2" B OAK      N40°E    19.6' 2" B OAK      S75°E    10.9' 6" B OAK      S35°W    43.2' 3" B OAK      S85°W    44.8'	SET DNR MON & CED POST. 8" J PINE      N85°W    16.4' 1" OAK        N10°W    70.4' 1" MAPLE      S10°W    38.1' 4" OAK        S30°W    41.5' 1" R PINE      S60°W    45.6'	SET DNR MON & CED POST. 12" OAK        N40°W    15.4' 8" R PINE      N45°E    40.3' 10' R PINE     S70°E    38.7' 12" R PINE     S 5°E    56.7' FD 5/8" IR ROD W/RLS CAP #13037    S07°53'W 25.4'

Signed by Carl F. Roser      5-22-92      Date \_\_\_\_\_  
 Surveyor's Michigan License No. 12028

