

LAND CORNER RECORDATION CERTIFICATE
Filing Requirement of Act 74, Mich. P.A. 1970

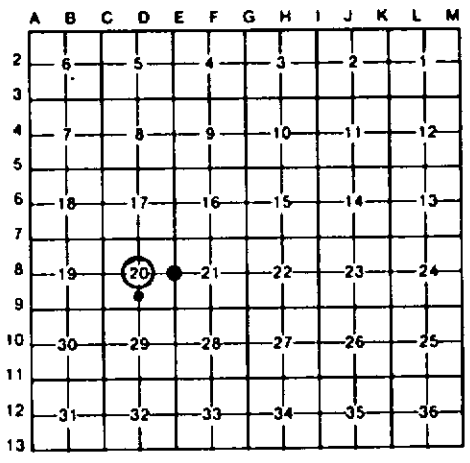
For corners in
CLARE
(County)

Located In: _____ Corner Code # _____

- | | | |
|------------------------------------|-----------------------------|-----------------|
| 1. Public Land Survey | T <u>20N</u> R <u>5W</u> | <u>D-8, E-8</u> |
| | T _____ R _____ | _____ |
| | T _____ R _____ | _____ |
| | T _____ R _____ | _____ |
| 2. Property Controlling in Section | S <u>20</u> T _____ R _____ | <u>12</u> |
| | S _____ T _____ R _____ | _____ |
| 3. Miscellaneous Property in Sec. | S _____ T _____ R _____ | _____ |
| | S _____ T _____ R _____ | _____ |

Register of Deeds Stamp & File Number

4. Lot No. _____, Recorded Plat _____
5. Private Claims _____



I, CARL F. ROSER, in a field survey on FEBRUARY 24, 19 92, do hereby certify that under requirements of P.A. 74, Michigan P.A. of 1970, the corner points mentioned in lines 1 and 2 above were in conformance with regulations and rules therefore as required in the current manual of survey instructions of the United States Department of the Interior, Bureau of Land Management or by a decree of a Court of Law and/or that the corner points mentioned in lines 3, 4 and 5 above were in conformance with the rules of the Michigan Board of Land Surveyors or by a Decree of a Court of Law; established, re-established, monumented, re-monumented, recovered, found as expressed below:

NOTE: Not more than 4 corners, all in the same town and range, may be recorded on this certificate.

A. Description of original monument and accessories and/or subsequent restoration:

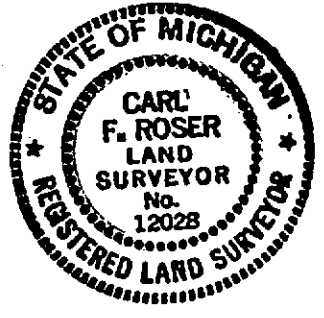
D-8	E-8	12
-----	-----	----

B. Description of corner evidence found and/or method applied in restoring or reestablishing corner:

D-8	E-8	12
ESTABLISHED CENTER OF SEC 20 AT INTERSEC OF 1/4 LINES. COR IS ON BRUSHED OUT TRUE LINE, N-S 1/4 LINE (N00°16'19"W). DROVE 5/8" X 34" REROD ON TOP OF RIVER VALLEY BANK, N00°16'19"W, 1074.14' FROM CTR OF SEC. 20.	RESTORED 1/4 COR COMMON TO SEC 20 & 21 ON LINE & DOUBLE DISTANCE ACROSS FD SE COR SEC 20, AND CALC S 1/8 COR POSITION (PER FD MONUMENTATION OF HOWARD HEIGHTS SUBDIVISION BY L.S. M. McCLUNG IN 1966). CTR 14'± WIDE DITCH IS 17' EAST. CTR N-S GRAVEL ROAD IS 7' WEST.	ESTAB NE COR OF S 1/2 OF SW 1/4 OF SEC 20, EQUIDISTANT AND ON LINE BETWEEN FD S 1/4 COR OF SEC 20 & CALC CTR OF SEC 20 (INTERSECTION OF 1/4 LINES).

C. Description of monument for corner and accessories established to perpetuate locating the position of the corner:

D-8	E-8	12
DROVE 5/8" X 34" REROD W/RLS CAP & SET CED POST W/LOC TAG. 2" W PINE N35°W 28.7' 10" B OAK N25°E 12.1' 4' TALL W PINE S70°E 21.1' 8" R PINE S10°E 78.6'	DROVE 5/8" X 34" REROD W/RLS CAP. POWER POLE N40°W 75.25' 9" J PINE N55°E 35.97' 12" J PINE S60°E 29.83' SET CED POST W/LOC TAG. EAST 33'	DROVE 5/8" X 34" REROD W/RLS CAP & SET CED POST W/LOC TAG. SW COR HOUSE N40°E 100.1' 7" R PINE S30°E 18.6' 5" R PINE S20°W 17.3' 8" R PINE N20°W 11.3' FD CONC PLAT MON N71°17'E 1.09'



Signed by Carl F. Roser 12028 Date 8-10-92

Surveyor's Michigan License No. _____