

(61)

5-14-71 - DUG HOLE FROM M.D.S.H.  
WITNESSES AND FOUND 1" PIN  
BURIED 1' BELOW SURFACE. ON  
NORTH E.M. OF ROAD.  
SET MON. BOX. W/ STONES AROUND.

N. 61° W - 29.72' - 34" OAK  
S. 25° E - 33.10' - 21" BOX ELDER  
S. 36° W - 32.00' - 34" OAK  
S. 15° W - 100.72' - N.E. COR. OF FOND.  
HOUSE ? EACH'S GIFT

SEPT 25-1929 WITNESSES  
LARGE STONE-POINTED END UP  
10" ASH - S. 01°-15' W. - 941'  
15" W. OAK - N. 61° W - 295'  
18" R. OAK - S. 32° W - 326'  
6" HICKORY - S. 75° W. - 114.0'

K-11  
TSN, RIC  
MOSH NOTES

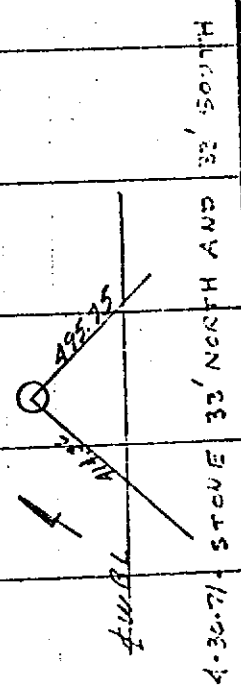
(63)

S.W. COR - SEC 25  
COMMON TO SECS 26, 35 & 36

WITNESSES IN TREES  
NO FIND -

M.S.H.D. wit old Plans  
COR. 15 Painted Stone

N 61° W - 29.80' - 30" OAK  
S 25° E - 33.4 - 10" R.E.  
S 36° W - 32.9 - 30" OAK



4-30-71 - STONE 33' NORTH AND 32' SOUTH