

JAN 21 2000

Clinton County Remonumentation  
Southeast Corner Section 13 and Northeast Corner Section 24,  
T.5 N.-R.4 W., Eagle Township  
LAND CORNER RECORDATION CERTIFICATE  
Filing Requirement of Act 74, Mich. P.A. 1970

LIBER 004 PAGE 379

For corners in

Clinton	Located In:	Corner Code #
(County)		
1. Public Land Survey	T <u>5N</u> R <u>4W</u> M- <u>7</u>	
	T _____ R _____	
	T _____ R _____	
	T _____ R _____	
2. Property Controlling in Section	S _____ T _____ R _____	
	S _____ T _____ R _____	
3. Miscellaneous Property in Sec.	S _____ T _____ R _____	
	S _____ T _____ R _____	

RECORDED

Dec 21 12 58 PM '99

REGISTER OF DEEDS  
CLINTON COUNTY, MICH.

*Carol Woolley*

Register of Deeds Stamp & File Number

4. Lot No. \_\_\_\_\_, Recorded Plat \_\_\_\_\_  
5. Private Claims \_\_\_\_\_

I, Samuel J. Clark, in a field survey on November 16, 1999 do hereby state that under requirements of P.A. 74, Michigan P.A. of 1970, the corner points mentioned in lines 1 and 2 above were in conformance with regulations and rules therefore as required in the current manual of survey instructions of the United States Department of the Interior, Bureau of Land Management or by a decree of a Court of Law and /or that the corner points mentioned in lines 3, 4 and 5 above were in conformance with the rules of the Michigan Board of Land Surveyors or by a Decree of a Court of Law; established, re-established, monumented, recovered, found as expressed below:

NOTE: Not more than 2 corners, all in the same town and range, may be recorded on this certificate.

	B	C	D	E	F	G	H	I	J	K	L	M
1												
2	6	5	4	3	2	1						
3												
4	7	8	9	10	11	12						
5												
6	18	17	16	15	14	13						
7												
8	19	20	21	22	23	24						
9												
10	30	29	28	27	26	25						
11												
12	31	32	33	34	35	36						
13												

A. Description of original monument and accessories and/or subsequent restoration:

M-7 Northeast Corner Section 24 and Southeast Corner Section 13, Eagle Township

Corner set February 1826 by Lucius Lyon, Deputy Surveyor with the following witnesses:

18" Beech	S45°W	46 lks. (30.36')
18" Beech	N76°W	37 lks. (24.42')

(Over)

B. Description of corner evidence found and/or method applied in restoring or reestablishing corner:

M-7 Northeast Corner Section 24 and Southeast Corner Section 13, Eagle Township

Found 1/2" Bar and Cap at M-7

Nail and Tag #18998 in W. Face 40" Willow	N25°E	77.55'
Nail and Tag #18998 in W. Face 30" Hickory	N14°E	171.57'
1/2" Rebar at A-7	South	116.50'

The 1/2" Bar found near M-7 was established using improper procedures.

I took into account that the Corner at M-6 had been established online and equidistant between M-5 and M-7 previously. By extending the township line south from M-6 (fits the plat of Elmhurst Estates) the corner falls 3.57' west of the 1/2" bar found. I excavated a 4'x4'x2.5' deep hole at both the new location and the location of the 1/2" rebar and found nothing. The amended location (based on record evidence placing the corner in a different location than the 1/2" iron) is hereby accepted as a careful and faithful reestablishment of the position the corner based on the best available evidence.

C. Description of monument for corner and accessories established to perpetuate locating the position of the corner:

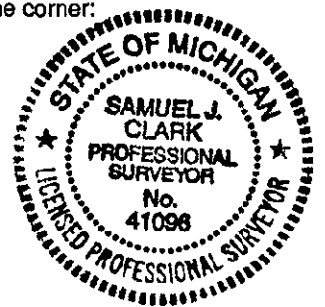
M-7 Northeast Corner Section 24 and Southeast Corner Section 13, Eagle Township

\*Set Standard Clinton County Monument in monument box

Nail and Tag #18998 in W. Face 40" Willow	N20°E	78.63'
Nail and Tag #18998 in W. Face 30" Hickory	N10°E	172.02'
Centerline S. End 36" Corrugated Metal Pipe	S21°E	67.20'
*Standard Clinton County Monument at A-7	S.00°-00'-51"E.,	116.59'
1/2" Iron found and M-8, Eagle Township	S.00°-05'-31"E.,	2637.20'
*Standard Clinton County Monument at M-6	N.00°-27'-16"W.,	2635.81'

Bearings based on a solar observation performed at M-1 Eagle Twp. on November 9, 1999

\*Standard Clinton County Monument being a 2 1/2" Diameter Steel Tube, 30" long, with a stamped brass cap, restamped #41096, and breakaway magnetic base.



Signed by Samuel J. Clark  
Surveyor's Michigan License No. 41096

Date 12/20/99

Survey of West 1/2 of the Fractional Southwest 1/4 Sec. 13, Eagle Township by John O. Palmer dated November 6, 1867 and recorded in Volume I, Page 1 of the County Surveyors Records. No reference to corners or accessories found or set at M-7.

Survey by R.H. Colburn, Clinton County, Surveyor, dated Oct. 6, 1885 and recorded in Volume I, Pages 238-240, of the "Quarter N-S" (North-South 1/4 Line) in order to settle a dispute. Transcribed within the pages of the survey is a deposition dated June 28, 1884, taken by R.H. Colburn, of Orville B. Ingersoll, former County Surveyor, stating that he made a survey of the south line of Section 13 in April, 1853 and that at that time he found the south 1/4 corner of said section and established a bearing tree. This survey or the transcribed affidavit make no reference to M-7 or its accessories.

Certificate of Survey by Fred White, PS# 12034, dated Dec. 12, 1972 and recorded in Liber 248, Pg. 1.

Railroad Spike noted at corner (not shown as found or set). No references to accessories found or set.

L.C.R.C. by Fred White, PS# 12034, dated Dec. 15, 1972 and recorded in Liber 001, Pg. 571.

Set Railroad spike from Northwest Corner of Section 19, T4N, R4W, on a direct line from Southeast corner of Section 24.

24" Walnut, N85°W, 74.84'

12" Walnut, N25°30'W, 76.08'

2" Steel Street Sign, S48°00'E, 36.4'

Certificate of Survey by R. Lester, PS# 18998, dated Dec. 1979, and recorded in Liber 2, Pg. 288

Reset 1/2" Bar per Rec. L. 1 Pg. 571 (White's L.C.R.C.).

Nail and Tag #18998 in West side 24" Hickory, N10°E, 171.57'

Nail and Tag #18998 in South side 16" Tri-apple, S40°E, 161.58'

Nail and Tag #18998 in West side 16" Willow, N60°E, 77.55'

Nail and Tag #18998 in South side 24" Twin Walnut, N80°W, 105.15'

L.C.R.C. by D. Richardson, PS#31603, dated Jan. 28, 1988 and recorded in Liber 3, Pg. 660

NE Corner Section 24, T5N, R4W

Found 1/2" Iron

N&T 24" Willow, N15°E, 77.55'

N. End centerline culvert, W 52.40'

N&T 8" Maple, N35°W, 60.93'

1/2" Iron S. 116.35' (NW Cor. Sec. 19, T5N, R3W)

LIBER 004 PAGE 380

JAN 27 2000

SECTION