

36

# LAND CORNER RECORDATION CERTIFICATE

## FILING REQUIREMENT OF ACT 74, MICH. P.A.1970

| FOR CORNERS OF--:  | LOCATED IN--: | CORNER CODE NUMBER |
|--|---------------|--------------------|
| 1. PUBLIC LAND SURVEY <u>11</u> T. <u>6</u> N. <u>1</u> R. <u>1</u> W.   |               | <u>B-5</u>         |
| 2. PROPERTY CONTROLLING IN SECTION _____, T. _____, S., R. _____ E. W.   |               |                    |
| 3. MISCELLANEOUS PROPERTY IN SECTION _____, T. _____, S., R. _____ E. W. |               |                    |
| 4. LOT NO. _____, RECORDED PLAT _____                                    |               |                    |
| 5. PRIVATE CLAIMS _____  |               |                    |

REGISTER OF DEEDS STAMP AND FILING NUMBER

I, D. SCOTT do hereby certify that under requirements of P.A. 74, Michigan P.A. of 1970, the corner points mentioned in lines 1 and 2 above (identified with circles on index code diagram - over) were, in a field survey on MAR. 17 1970, established, re-established, monumented, re-monumented, recovered or restored as expressed below and in conformance with regulations and rules therefore as required in the current manual of survey instructions of the United States Department of the Interior, Bureau of Land Management or by a decree of a court of law. Furthermore, that the corner points mentioned in lines 3, 4 and 5 above were, in a field survey on MAR. 17 1970, found, recovered, restored, established or re-established as expressed below and in conformance with the rules of the Michigan State Board of Registration for Land Surveyors or, by a Decree of a Court of law:

A. Description of original monument and accessories and/or subsequent restoration:

B. Description of corner evidence found and/or method applied in restoring or re-establishing corner:

FOUND 1 1/2" PINCHED PIPE

C. Description of monument for corner and accessories established to perpetuate locating the position of the corner:

- S 51° W 32.9' 9" OAK PK. NAIL & BRASS TAG NW SIDE
- S 19° W 15.5' to ROAD Sign "JASON RD - Upton Rd"
- S 10° W 34.9' 15" OAK PK. NAIL & BRASS TAG E. Side
- N 42° W 60.9' Dept. of NAT. Res. Sign Post.

SIGNED BY [Signature] DATE 6 Dec 1973

SURVEYOR'S MICHIGAN REGISTRATION NO. 12029 (SEAL)

FOR STATE AND UNITED STATES AGENCIES:

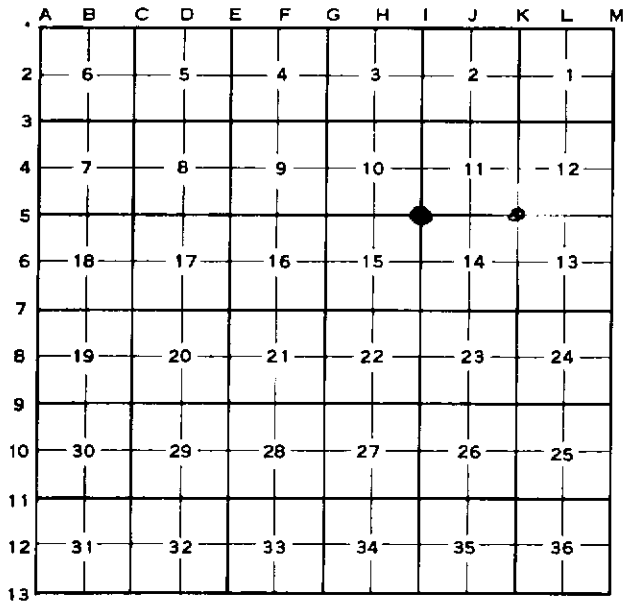
SIGNED BY \_\_\_\_\_ DATE \_\_\_\_\_  
CHIEF OF SURVEY PARTY

APPROVED AND SIGNED BY \_\_\_\_\_ DATE \_\_\_\_\_  
MICHIGAN REGISTERED LAND SURVEYOR (SEAL)

SURVEYOR'S MICHIGAN REGISTRATION NO. \_\_\_\_\_

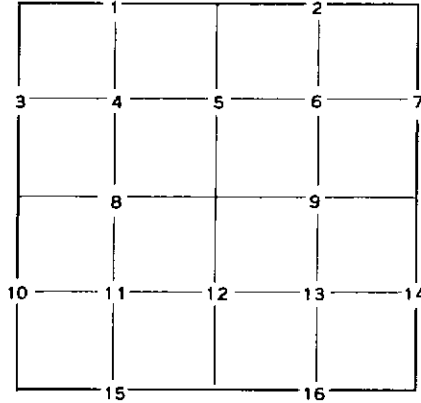
**CORNER NUMBERING CODE DIAGRAMS FOR IDENTIFYING LAND CORNER RECORDATIONS AND INDEXING**

FOR PUBLIC LAND SURVEY CORNERS IN THE  
T. \_\_\_\_\_, R. \_\_\_\_\_ (MENTIONED OVER)



Apply letter prefix for corner points encircled above for identifying corner recordation numbers over.

FOR PROPERTY CONTROLLING AND MISC.  
PROPERTY CORNERS WITHIN THE SECTION  
(MENTIONED OVER AND EXCLUDE LOT CORNER)



1. Above coded numbers are positioned on 1/16 fractional lines of the section.
2. Township corner code numbers shall be applied to corners of above typical section not numbered.
3. Miscellaneous property corners within a section, located at points other than numbered above, shall be referenced to at least two of above corner code numbers.
4. Private claim corners to be tied to rectangular land corners if possible - sketch required below.

**EXPLANATORY SKETCH IF NECESSARY -- BELOW**

