

REMONUMENTATION
JAN 17 1996 SECTION 13, OLIVE TOWNSHIP
 LAND CORNER RECORDATION CERTIFICATE
 COMMISSIONING Requirement of Act 74, Mich. P.A. 1970

RECORDED

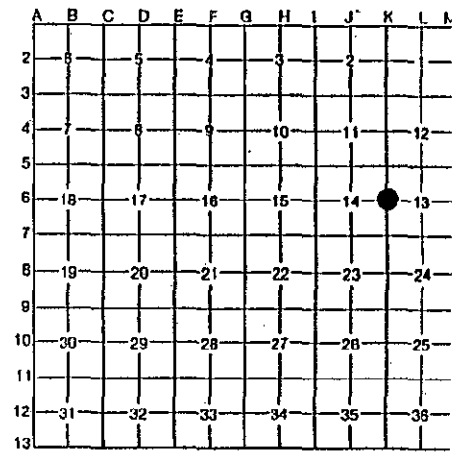
Nov 9 9 03 AM '95
 REGISTER OF DEEDS
 CLINTON COUNTY, MICH.
Carol Winkley

For corners in <u>Clinton</u> (County)	Located In:	Corner Code #
1. Public Land Survey	T <u>6N</u> R <u>2W</u>	<u>K-6</u>
	T _____ R _____	_____
	T _____ R _____	_____
	T _____ R _____	_____
2. Property Controlling in Section	S _____ T _____ R _____	_____
	S _____ T _____ R _____	_____
3. Miscellaneous Property in Section	S _____ T _____ R _____	_____
	S _____ T _____ R _____	_____

LIBER 4, PAGE 101

Register of Deeds Stamp & File Number

4. Lot No. _____, Recorded Plat _____
 5. Private Claims _____



Arden S. Pierson P.S. in a field survey on September 15, 1995,
 do hereby certify that under requirements of P.A. 74, Michigan P.A. of 1970, the corner points mentioned
 in lines 1 and 2 above were in conformance with regulations and rules therefore as required in the current
 manual of survey instructions of the United States Department of the Interior, Bureau of Land
 Management or by a decree of a Court of Law and/or that the corner points mentioned in lines 3, 4 and
 5 above were in conformance with the rules of the Michigan Board of Professional Surveyors or by a
 Decree of a Court of Law; established, re-established, monumented, re-monumented, recovered, found
 as expressed below:

NOTE: Not more than 4 corners, all in the same town and range, may be recorded
 on this certificate.

A. Description of original monument and accessories and/or subsequent restoration:

Original survey by Hervey Parke DS in 1827, 40 chains, W. Oak 16" -
 S11°E - 19 links; W. Oak 34" - N20°E - 34 links.

(OVER)

B. Description of corner evidence found and/or method applied in restoring or reestablishing corner:

Found 1/2" pipe in monument box. Accepted 1/2" pipe as a careful and
 faithful reestablishment of the position of the original corner.

Set Standard Clinton County Monument and monument box.



C. Description of monument for corner and accessories established to perpetuate locating the position of the corner:

West 1/4 Corner, Section 13

- *Standard Clinton County Monument in monument box
- Face Post Stop & Road Sign - N69°E - 45.95'
- Nail & Tag #13039 SE Side Power Pole - S41°W - 51.00'
- Nail & Tag #13039 W. Side Power Pole - N15°E - 187.62'
- Nail & Tag #13039 E. Side Power Pole - N6°W - 187.75'

*Standard Clinton County Monument is a 2 1/2" dia. steel tube
 30" long with a stamped brass cap and a breakaway magnetic base.

Signed by Arden S. Pierson

Date October 16, 1995

Surveyor's Michigan License No. 13039

FORM APPROVED BY MICHIGAN STATE BOARD OF PROFESSIONAL SURVEYORS, JAN. 28, 1971
 REVISED MAY 14, 1975
 REVISED JAN., 1983

APPROVED BY
 CLINTON COUNTY PEER GROUP
 DATED 10/18/95
S 7-9

9/15/95
 "

LCRC Liber 1, Page 247, dated April 10, 1972 by Hathaway Hanes #5260

Set 1" iron pipe
Road Sign - N40°E - 46.4'
30" Elm Stump - S40°W - 55.60' - RR Spike
20" Elm - S45°E - 40.7' - Form Nail

Certified Boundary Survey by Hathaway Hanes #5260, dated April 26, 1972, Liber 1, Page 108.

1" Pipe Found
Road Sign - N40°E - 46.4'
Elm Stump - S40°W - 55.60' - R.R. Spike
20" Elm - S45°E - 40.7' - Nail

MDOT survey notes by E. Morse, PS, dated May 28, 1980.

Witnesses to E ¼ Corner Section 14, found: 3/4" pipe on surface (James E. Stephens RLS #16053, Liber 1, Page 693). Excavated the orig. ground, found nothing! Reset corner with 3/4" x 30" pipe in monument box 6" below surface. Placed bit. patch around box. Used recorded witnesses. Set RLS Cap #20708 in said pipe.

Tag in 14" Walnut - S40°W - 44.44'
Surv. Tag E. Side 18" Hickory - N38°34'W - 45.40'
Surv. Tag N. Side Utility Pole - S66°07'W - 29.65'
Surv. Tag N. Side 24" Oak - S71°34'E - 83.19'
The bearing of the ¼ line east of the Corner is S89°41'50"E

Certified Boundary Survey by Mark VanRaemdonck #24622, dated August 18, 1987, Liber 3, Page 178.

Found 1" pin in monument box.
Rerod & cap #28068 - N45°W - 46.65'
South Edge Road Sign Post - N65°E - 46.15'
Nail & tag East Face Power Pole - S30°W - 51.0'
Top, Cen. Tele. Cable Cabinet - S45°W - 47.0'

Certified Boundary Survey by Mark VanRaemdonck #24622, dated January 21, 1988, Liber 3, Page 246.

Found 1" pin in monument box.
Rerod & cap #28068 - N45°W - 46.65'
South Edge Road Sign Post - N65°E - 46.15'
Nail & tag East Face Power Pole - S30°W - 51.0'
Top, Cen. Tele. Cable Cabinet - S45°W - 47.0'