

LAND CORNER RECORDATION CERTIFICATE
Filing Requirement of Act 74, Mich. P.A. 1970

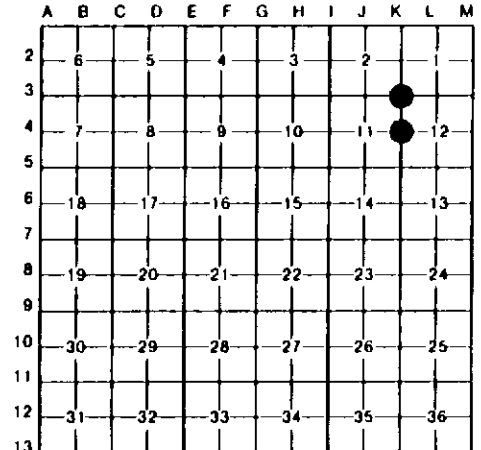
For corners in

Clinton County (County)	Located In:	Corner Code //
1. Public Land Survey	T 8N R 1W	K-3
	T 8N R 1W	K-4
	T R	
	T R	
2. Property Controlling in Section	S T R	
	S T R	
3. Miscellaneous Property in Sec.	S T R	
	S T R	

Register of Deeds Stamp & File Number

4. Lot No. _____, Recorded Plat _____
 5. Private Claims _____

I, Gary C. Bilow, in a field survey on April, 1990, do hereby certify that under requirements of P.A. 74, Michigan P.A. of 1970, the corner points mentioned in lines 1 and 2 above were in conformance with regulations and rules therefore as required in the current manual of survey instructions of the United States Department of the Interior, Bureau of Land Management or by a decree of a Court of Law and/or that the corner points mentioned in lines 3, 4 and 5 above were in conformance with the rules of the Michigan Board of Land Surveyors or by a Decree of a Court of Law, established, re-established, monumented, re-monumented, recovered, found as expressed below:



NOTE: Not more than 4 corners, all in the same town and range, may be recorded on this certificate.

A. Description of original monument and accessories and/or subsequent restoration:

K-3: Corner established by U.S. Government Deputy Surveyor R. Thomas in 1831; accessories - Pine 12, N42E, 28 links & Sugar 10, S71W, 10 links. J. Quine, RLS #10704, re-established corner in 1964 as recorded in Field Book 6, Page 75 as "set nail & cap - accessories: NW 65.1', Telephone Pole; SW 53.2', Guy pole; SE 48.1', Catalpa 20"; West 4.2', Center of road." J. Quine records in 1977 in Field Book 20, Page 71 "Recovered nail set in 1964 and raised with masonry nail - accessories: West 3.8', railroad spike; S45E 38.4', Power pole; S65W 77.9', Power pole; N50E 36.8', Brace pole."

K-4: Corner established by U.S. Government Deputy Surveyor R. Thomas in 1831; accessories - Sugar 24, N41E, 21 links & Beech 18 S19W, 20 links. Corner recorded under Act 74, PA 1970 by G. Stevenson, RLS #13600, in Liber 1, Page 929 in 1975.

B. Description of corner evidence found and/or method applied in restoring or reestablishing corner:

K-3: Found masonry nail and nail with cap below as described in J. Quine's notes and accepted as the best evidence of the original GLO corner.

K-4: Found railroad spike in monument box and recovered three (3) of Stevenson's accessories. Accepted this corner as the best evidence of the original GLO corner.

C. Description of monument for corner and accessories established to perpetuate locating the position of the corner.

K-3: Replaced nails with 1/2" x 24" capped rebar LLS #26453 in a Monument Box
 S70W 74.33', Nail & cap in utility pole
 S40E 41.03', Nail & cap in utility pole
 West 3.77', Railroad spike
 N65E 38.61', Nail & Michigan Department of Natural Resources Tag in utility pole

K-4: Found Railroad Spike in Monument Box
 East 32.70', 1/2" iron pipe
 West 33.00', 3/8" iron pipe
 N70W 63.10', SE corner of building
 S70W 26.17', Top Center of Hydrant



Signed by Gary C. Bilow
 Surveyor's Michigan License No. 26453

Date 1/9/92