

LAND CORNER RECORDATION CERTIFICATE

Filing Requirement of Act 74, Mich. PA 1970

For Corners In:
Crawford
 (County) Located In Corner Code #

1. Public Land Survey		T	<u>25N</u>	R	<u>2W</u>	<u>C-5</u>
		T		R		
2. Property Controlling in Section	S	<u>17</u>	T	<u>25N</u>	R	<u>2W</u>
	S		T		R	
3. Miscellaneous Property in Section	S		T		R	
	S		T		R	

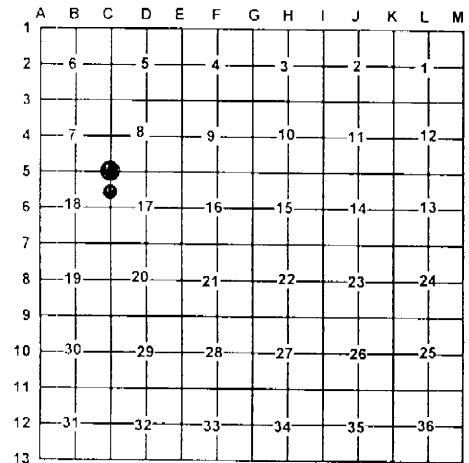
4. Lot No: _____ Recorded Plat: _____

5. Private Claims: _____

I, Carl T. Kiiskila, in a field survey on May 18, 2004 do hereby state that under requirements of PA 74, Michigan PA of 1970, the corner points mentioned in lines 1 and 2 above were in conformance with regulations and rules therefore as required in the current manual of survey instructions of the United States Department of the Interior, Bureau of Land Management or by a decree of a Court of Law and/or that the corner points mentioned in lines 3, 4 and 5 above were in conformance with the rules of the Michigan Board of Land Surveyors or by a Decree of a Court of Law; established, re-established, monumented, recovered, found as expressed below:

NOTE: Not more than 2 corners, all in the same town and range, may be recorded on this certificate.

Register of Deeds Stamp & File Number



A. Description of original monument and accessories and/or subsequent restoration:

C-5 G.L.O. D. A. Pettibone 1852 Set corner to sections 7, 8, 17, and 18.

Wit: Spruce Pine 8" N35°W 8.5 links

October 1970, Robert Griffin R.L.S. #13584 Found a 1 1/4" pipe for the corner.

Wit: Cabin Foundation	N66°W	97.65'
Cabin Foundation	N46°W	116.36'
7" B. Oak	N38°E	81.57'
Cedar Post	West	32.83'

3- October 1970, Robert Griffin R.L.S. #13584 set a 5/8" X 24" iron rod for the corner

Wit: 4" J. Pine	N58°E	37.44'
Cedar Post	East	33.54'
7" J. Pine	N55°W	48.72'

B. Description of corner evidence found and/or method applies in restoring or re-establishing corner:

C-5 Found 1 1/4" pipe as used by R. Griffin in October of 1970.

3- Found 5/8" iron rod as set by R. Griffin

C. Description of monument for corner and accessories established to perpetuate locating the position of the corner:

C-5 Found 1 1/4" Pipe

Wit: 4" Spruce	N31°E	58.54'
4" W. Pine	S32°E	45.88'
SE cor. Of Cabin	N36°W	116.25'
SE cor. Of Cabin	N70°W	89.33'
Cedar Post	West	32.97'

3- Found 5/8" rered

Wit: 9" J. Pine	N67°E	37.50'
P. Pole	S56°E	30.63'
8-10" Oak clump	S54°W	93.82'
Cedar Post	S56°E	30.62'

Signed by:

Carl T. Kiiskila

Date:

7-6-04

Surveyor's Michigan License No.:

33981

