

STATE OF MICHIGAN
DEPARTMENT
OF
NATURAL RESOURCES

LAND CORNER RECORD

CRAWFORD COUNTY

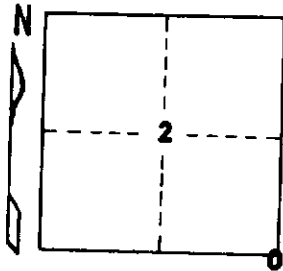
T 25 N R 3 W

DESCRIPTION OF CORNER Sec. corner common to Sections 1-2-11-12

CORNER MONUMENT Left R R rail in place

DATE MONUMENT PLACED AND WITNESSED 5-5-69

WITNESSES TO CORNER..... 7" J. Pine S 65 W 65.0'



6" J. Pine N 50 E 86.7'

7" J. Pine S 64 E 81.7'

AND

CIRCLE CORNER REGISTERED

DESCRIPTION IN DETAIL AS TO HOW CORNER WAS LOCATED AND IDENTIFIED OR RESTORED.

This corner was found during research for corners in the area. Found RR rail in center N-S road, probably established by Newman and used in subsequent surveys. Falls about 25' South of center of road west.

Another pipe (1½") is located S45E 3.9', origin unknown.

SURVEYOR'S SEAL

DISTRIBUTION:

SIGNED

Kenneth J. Dethling
REGISTERED LAND SURVEYOR 10068

DATE

7/25/69

County Courthouse
Area Forester (Regions I & II)
District or Region Surveyor
Forestry Div., Lansing

R 4047
Rev. 10/68