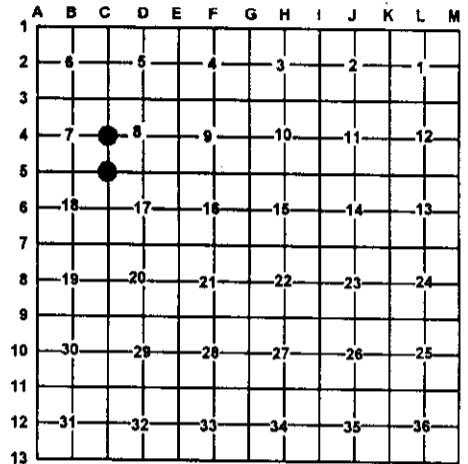


LAND CORNER RECORDATION CERTIFICATE

Filing Requirement of Act 74, Mich. PA 1970

| | | |
|--|--------------------------|---------------|
| For Corners In: <u>Crawford</u> (County) | Located In | Corner Code # |
| 1. Public Land Survey | T <u>25N</u> R <u>3W</u> | <u>C-4</u> |
| | T <u>25N</u> R <u>3W</u> | <u>C-5</u> |
| 2. Property Controlling in Section | S _____ T _____ R _____ | _____ |
| | S _____ T _____ R _____ | _____ |
| 3. Miscellaneous Property in Section | S _____ T _____ R _____ | _____ |
| | S _____ T _____ R _____ | _____ |
| 4. Lot No: _____ | Recorded Plat: _____ | |
| 5. Private Claims: _____ | | |

Register of Deeds Stamp & File Number



I, Carl T. Kiiskila, in a field survey on January 19, 2001 do hereby state that under requirements of PA 74, Michigan PA of 1970, the corner points mentioned in lines 1 and 2 above were in conformance with regulations and rules therefore as required in the current manual of survey instructions of the United States Department of the Interior, Bureau of Land Management or by a decree of a Court of Law and/or that the corner points mentioned in lines 3, 4 and 5 above were in conformance with the rules of the Michigan Board of Land Surveyors or by a Decree of a Court of Law; established, re-established, monumented, recovered, found as expressed below:

NOTE: Not more than 2 corners, all in the same town and range, may be recorded on this certificate.

A. Description of original monument and accessories and/or subsequent restoration:

C-4 G.L.O. Addison P. Brewer D.S. Aug. 1852
 Set quarter section post
 Wit: Yellow Pine 16" N53°W 293 links
 Dead Yellow Pine 24" N72°E 22 links

C-5 G.L.O. Addison P. Brewer D.S. Aug. 1852
 Set post corner of section 7, 8, 17, and 18
 Wit: Yellow pine 17 N84°W 99 links
 Spruce Pine 12 S88°E 19 links

MSHD witness record Matt Koivisto 1969 chiseled "X" in conc. pavement corner set by G. Henning in 1942 destroyed during construction in this area. Therefore we replaced corner as per Henning Survey-Midway and on line between section corner North and South of 1/4 corner common to section 7 and 8 wit: 12" J. Pine S75°W 71.70', 12" J. Pine N83°W 67.58', 14" J. Pine N68°W 71.93'.

MSHDS witness record by Matt Koivisto shows tie to corner. No witnesses or type of monument were given.

B. Description of corner evidence found and/or method applies in restoring or re-establishing corner:

C-4 Found 1/2" rod fitting Matt Koivisto record distance South.

C-5 Found 5/8" rered fitting Matt Koivisto record distance North.

C. Description of monument for corner and accessories established to perpetuate locating the position of the corner:

C-4 Found 1/2" rod, drove 1" X 32" iron pipe with P.S. cap #33981 over found rod

C-5 Found 5/8" rered, drove 1" X 32" iron pipe with P.S. cap #33981 over found rod

Wit: 3" Oak S64°W 73.94'
 6" Oak S82°W 68.55'
 6" Poplar N40°W 75.87'
 Hwy Sign Mile post 249 S05°E 136.85'
 West edge of Conc. East 41.7'

Wit: Power pole N66°W 96.76'
 14" Oak N72°E 27.88'
 12" Jack Pine S68°E 80.74'
 Power Pole N59°E 40.78'
 Centerline blacktop road West 25.5'

Signed by:

Carl T. Kiiskila

Date:

11-27-01

Surveyor's Michigan License No.:

33981

