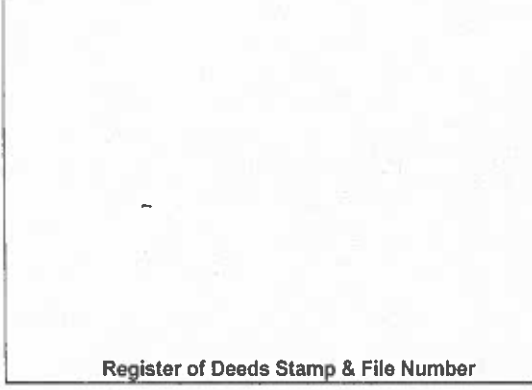


# LAND CORNER RECORDATION CERTIFICATE

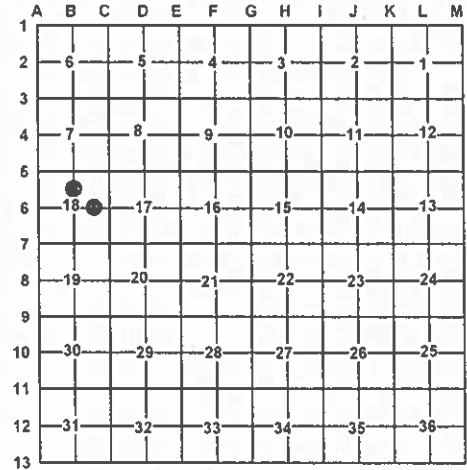
Filing Requirement of Act 74, Mich. PA 1970

For Corners In: Crawford (County)	Located In	Corner Code #	
1. Public Land Survey	T _____ R _____		
	T _____ R _____		
2. Property Controlling in Section	S 18 T 26N R 1W	5	
	S 18 T 26N R 1W	9	
3. Miscellaneous Property in Section	S _____ T _____ R _____		
	S _____ T _____ R _____		
4. Lot No: _____	Recorded Plat: _____		
5. Private Claims: _____			



I, Carl T. Kiiskila, in a field survey on August 17, 2006 do hereby state that under requirements of PA 74, Michigan PA of 1970, the corner points mentioned in lines 1 and 2 above were in conformance with regulations and rules therefore as required in the current manual of survey instructions of the United States Department of the Interior, Bureau of Land Management or by a decree of a Court of Law and/or that the corner points mentioned in lines 3, 4 and 5 above were in conformance with the rules of the Michigan Board of Land Surveyors or by a Decree of a Court of Law; established, re-established, monumented, recovered, found as expressed below:

**NOTE: Not more than 2 corners, all in the same town and range, may be recorded on this certificate.**



**A. Description of original monument and accessories and/or subsequent restoration:**

- 5- This corner position was not established during the original government survey.
- 9- 1978 Glenn A. Fauser P.S. #18657 set a 1/2" rod for the corner while doing work for Consumers Power Co.

**B. Description of corner evidence found and/or method applies in restoring or re-establishing corner:**

- 5- Established the Northwest corner of the Southwest quarter of the Northeast quarter of section 18 as per B.L.M. instructions for the subdivision of a section.
- 9- Found 1/2" rod as set by Glenn A. Fauser.

**C. Description of monument for corner and accessories established to perpetuate locating the position of the corner:**

- |  |  |
|--|--|
| 5- Set 5/8" X 32" rerod with P.S. cap #33981<br>Wit: 4" W. Pine      N39°E      14.77'<br>4" Spruce        S81°E      7.87'<br>6" Oak            S18°E      7.70'<br>5" Spruce        N87°W      8.65' | 9- Found 1/2" rod added P.S. cap #33981<br>Wit: 12" J. Pine      S39°E      34.44'<br>3" J. Pine        S60°W      4.38'<br>5" J. Pine        N50°W      11.75'<br>4" J. Pine        N78°E      30.21' |
|--|--|

Signed by: Carl T. Kiiskila  
 Surveyor's Michigan License No.: 33981

Date: 2-5-07

