

STATE OF MICHIGAN
DEPARTMENT
OF
NATURAL RESOURCES

LAND CORNER RECORD

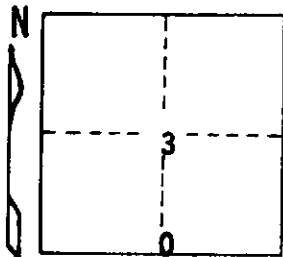
CRAWFORD COUNTY
T 26 N R 1 W

DESCRIPTION OF CORNER 1/4 corner common to Sections 3-10

CORNER MONUMENT Set Department Monument

DATE MONUMENT PLACED AND WITNESSED 1-28-71

WITNESSES TO CORNER.....



24" R. Pine N 26 W 90.8'

30" R. Pine N 50 E 103.3'

AND

CIRCLE CORNER REGISTERED

DESCRIPTION IN DETAIL AS TO HOW CORNER WAS LOCATED AND IDENTIFIED OR RESTORED.

This corner was found during a survey of Section 3. Found 1/2" iron bar at corner, as restored in a survey by J. Richardson at position of 1909 Fargo corner. This position used in a number of surveys adjacent to this corner, but is not the same location prescribed by the 1948 Henning survey of the N 1/2 of Section 10.

It is felt that the Fargo corner was apparent, and of long standing, was used by a number of subsequent surveys, and its use would create the least disturbance of apparent occupation.

SURVEYOR'S SEAL

DISTRIBUTION:

SIGNED

Franklin J. Ostling
REGISTERED LAND SURVEYOR

DATE

2/9/71

10068

County Courthouse
Area Forester (Regions I & II)
District or Region Surveyor
Forestry Div., Lansing

R 4047
Rev. 10/68