

STATE OF MICHIGAN  
DEPARTMENT  
OF  
NATURAL RESOURCES

LAND CORNER RECORD

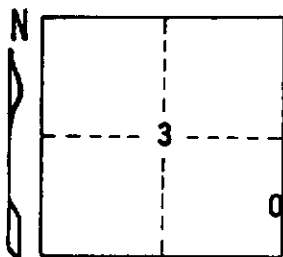
CRAWFORD COUNTY  
T 26 N R 1 W

DESCRIPTION OF CORNER S 1/16 corner common to Sections 2-3

CORNER MONUMENT Set 1"x24" Pipe

DATE MONUMENT PLACED AND WITNESSED 1-28-71

WITNESSES TO CORNER.....



Nail in 20" W. Pine N 68 W 17.8'

Nail in 8" Tw. Maple N 78 E 20.8'

AND

CIRCLE CORNER REGISTERED

DESCRIPTION IN DETAIL AS TO HOW CORNER WAS LOCATED AND IDENTIFIED OR RESTORED.

This corner was set by standard survey procedure to mark state land boundary.  
Concrete tile monument set in unofficial survey is 11.7' West and 5.7' North of  
proper subdivisional positions.

SURVEYOR'S SEAL

DISTRIBUTION:

SIGNED

*Ernest J. Ostling*  
REGISTERED LAND SURVEYOR

DATE

2/9/71

10068

County Courthouse  
Area Forester (Regions I & II)  
District or Region Surveyor  
Forestry Div., Lansing

R 4047  
Rev. 10/68