

SURVEY & REMONUMENTATION

MAY 05 1997

LAND CORNER RECORDATION CERTIFICATE

Filing Requirement of Act 74, Mich. P.A. 1970

For corners in COMMISSION
Crawford (County)

Located In:

Corner Code #

- | | | | | | |
|--------------------------------------|---|-----|---|----|-------|
| 1. Public Land Survey | T | 26N | R | 3W | E - 2 |
| | T | | R | | |
| | T | | R | | |
| | T | | R | | |
| 2. Property Controlling in Section | S | | T | R | |
| | S | | T | R | |
| 3. Miscellaneous Property in Section | S | | T | R | |
| | S | | T | R | |

STATE OF MICHIGAN
CRAWFORD COUNTY
RECORDED

7 JUN 96 9:48 A.M.

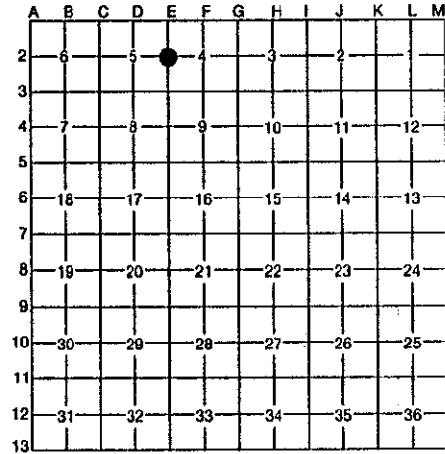
SANDRA MOORE
REGISTER OF DEEDS

Register of Deeds Stamp & File Number

4. Lot No. _____, Recorded Plat _____
5. Private Claims _____

LIBER 3 PAGE 236

I, Marvin E. Myers, in a field survey on December 14, 19 95, do hereby certify that under requirements of P.A. 74, Michigan P.A. of 1970, the corner points mentioned in lines 1 and 2 above were in conformance with regulations and rules therefore as required in the current manual of survey instructions of the United States Department of the Interior, Bureau of Land Management or by a decree of a Court of Law and/or that the corner points mentioned in lines 3, 4 and 5 above were in conformance with the rules of the Michigan Board of Professional Surveyors or by a Decree of a Court of Law; established, re-established, monumented, re-monumented, recovered, found as expressed below:



NOTE: Not more than 4 corners, all in the same town and range, may be recorded on this certificate.

A. Description of original monument and accessories and/or subsequent restoration:

- | | | |
|---|--|---|
| GLO-James Mullett 1839
Mon.-Set Post
WIT: 9" S.Pine N23°E 22 lks.
8" S.Pine S19°W 7 lks. | G. Boss June 1988 L.280, pg.42
Mon.-½" Iron fd. in C
WIT: Nail in 5" J.Pine N35°W 79.04'
Nail in U.Pole N40°E 67.17'
Spike in 5" J.Pine S40°E 83.65' | Larry Cavanagh Jan. 1989 L.301, pg.393
Mon.-Unknown
WIT: Nail in 5" J.Pine N35°W 79.04'
Nail in U.Pole N40°E 67.17'
Spike in 5" J.Pine S40°E 83.65' |
|---|--|---|

B. Description of corner evidence found and/or method applied in restoring or reestablishing corner:

Monument - Fd. 10" cabin spike alongside ½"x18" iron bar in centerline N. Down River Rd.
WIT: Nail NW side utility pole N41°E 67.22'
Nail SW side 6" J.Pine S28°E 83.65'
Plat GRAYLING MOBILE ESTATES

**CRAWFORD COUNTY
PEER GROUP APPROVAL
DATE Dec 19, 1995**

Marvin E. Myers
**Marvin E. Myers, P.S.
County Surveyor**

C. Description of monument for corner and accessories established to perpetuate locating the position of the corner:

Mon.-Set standard Crawford County monument stamped "E-2 T26N, R3W 31600" in mon. box in centerline N. Down River Rd.
WIT: Nail & Tag NW side 7" J.Pine S72°W 41.17'
Nail & Tag NE side 8" J.Pine N21½°W 79.15'
Nail NW side U.P. N41°E 67.22'
Nail & Boss Tag W. side 8" J.Pine S28°E 83.72'



Signed by *Marvin E. Myers*
Surveyor's Michigan License No. 31600

Date June 6, 1996