

MICHIGAN  
DEPARTMENT OF CONSERVATION  
FORESTRY DIVISION

# LAND CORNER RECORD

T. 26 N.R. 4 W

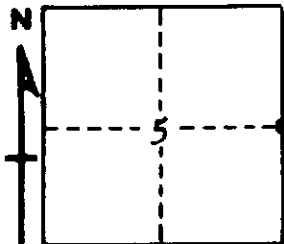
Crawford COUNTY

DESCRIPTION OF CORNER 1/4 corner common to Sections 4 and 5

CORNER MONUMENT 1" pipe with 4" brass cap

DATE MONUMENT PLACED AND WITNESSED 5/10/61

WITNESSES TO CORNER.....



8" W. Oak - S54E - 32.2 feet

8" R. Oak - S89W - 15.7 feet

AND

CIRCLE CORNER REGISTERED

DESCRIPTION IN DETAIL AS TO HOW CORNER WAS LOCATED AND IDENTIFIED OR RESTORED.

This corner was set by Forestry Division Land Surveyor. Restored corner from probable government BT stumps, both in place but badly burned. Falls very nearly at proportionate measurement between section corners. Found possible evidence of old post when setting corner.

SURVEYOR'S SEAL

SIGNED *Kenneth J. Ostling* DATE 10/3/61

REGISTERED LAND SURVEYOR