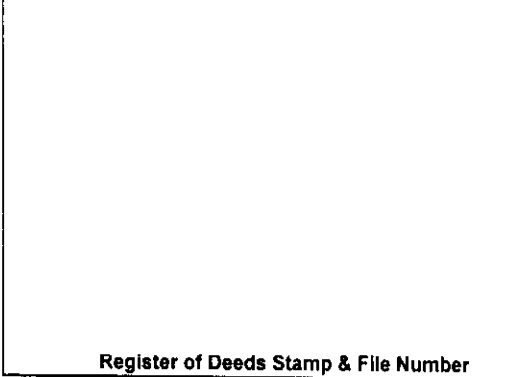


# LAND CORNER RECORDATION CERTIFICATE

Filing Requirement of Act 74, Mich. PA 1970

For Corners In:			
<u>Crawford</u>	Located In	Corner Code #	
(County)			
1. Public Land Survey	T <u>26N</u>	R <u>4W</u>	<u>J-3</u>
	T <u>26N</u>	R <u>4W</u>	<u>I-2</u>
2. Property Controlling in Section	S _____	T _____	R _____
	S _____	T _____	R _____
3. Miscellaneous Property in Section	S _____	T _____	R _____
	S _____	T _____	R _____



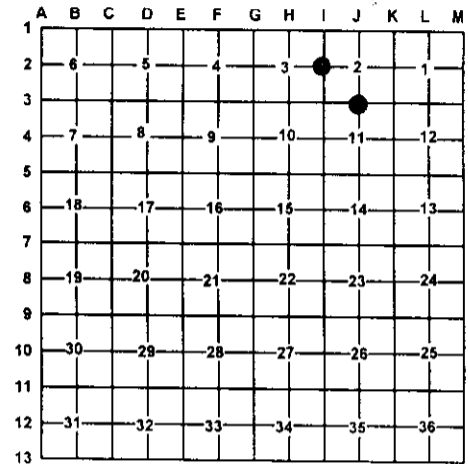
Register of Deeds Stamp & File Number

4. Lot No: \_\_\_\_\_ Recorded Plat: \_\_\_\_\_

5. Private Claims: \_\_\_\_\_

I, Carl T. Kiiskila, in a field survey on January 19, 2001 do hereby state that under requirements of PA 74, Michigan PA of 1970, the corner points mentioned in lines 1 and 2 above were in conformance with regulations and rules therefore as required in the current manual of survey instructions of the United States Department of the Interior, Bureau of Land Management or by a decree of a Court of Law and/or that the corner points mentioned in lines 3, 4 and 5 above were in conformance with the rules of the Michigan Board of Land Surveyors or by a Decree of a Court of Law; established, re-established, monumented, recovered, found as expressed below:

**NOTE: Not more than 2 corners, all in the same town and range, may be recorded on this certificate.**



**A. Description of original monument and accessories and/or subsequent restoration:**

J-3 G.L.O. Addison P. Brewer D.S. 1852  
Set quarter section post  
Wit: Yellow Pine 8 N31°E 16 links  
White Pine 14 S17°W 28 links

I-2 G.L.O. Addison P. Brewer D.S. 1852  
Set quarter section post  
Wit: Yellow Pine 10 N30°E 11 links  
Yellow Pine 24 S80°W 26 links

Kenneth J. Ostling RLS #10068 March 1956  
Michigan Department of Conservation land corner record shows 1" pipe with 4" brass cap placed from both original B.T. stumps.  
Wit: 8" B. Oak S67°W 47 links  
8" B. Oak S15°E 83 links

Kenneth J. Ostling RLS #10068 March 1956  
Michigan Department of Conservation land corner record shows 1" pipe with 4" brass cap placed at a very old rotted post. Both original B.T. stumps in place with evidence of face.  
Wit: 7" J. Pine S45°E 42.5 links  
6" B. Oak N24°W 24.5 links

**B. Description of corner evidence found and/or method applies in restoring or re-establishing corner:**

J-3 Found D.N.R. monument

I-2 Found D.N.R. monument

**C. Description of monument for corner and accessories established to perpetuate locating the position of the corner:**

J-3 Found D.N.R. Monument  
Wit: 14" Oak N75°E 25.08'  
16" Oak North 40.15'  
14"-22" Oak clump S80°W 30.90'  
4" White Pine S10°W 55.64'  
Carsonite Post West 2'±

I-2 Found D.N.R. Monument  
Wit: 10" Oak N35°W 103.57'  
14" Oak N62°W 115.18'  
4" Jack Pine S46°W 25.37'  
3" Jack Pine East 20.53'  
Carsonite Post North 1'±

Signed by: Carl T. Kiiskila  
Surveyor's Michigan License No.: 33981

Date: 4-8-02