

CRAWFORD COUNTY REMONUMENTATION  
**LAND CORNER RECORDATION CERTIFICATE**  
 Filing Requirement of Act 74, Mich. P.A. 1970

For corners in

<u>Crawford</u> (County)	Located In:	Corner Code #
1. Public Land Survey	T <u>26N</u> R <u>2W</u>	<u>C - 7</u>
	T _____ R _____	_____
	T _____ R _____	_____
	T _____ R _____	_____
2. Property Controlling in Section	S _____ T _____ R _____	_____
	S _____ T _____ R _____	_____
3. Miscellaneous Property in Sec.	S _____ T _____ R _____	_____
	S _____ T _____ R _____	_____

STATE OF MICHIGAN  
 COUNTY OF CRAWFORD  
 FILED FOR RECORD THIS  
5th DAY OF Jan, 1994  
 11:50 am, IN LIBER 3 4c  
 PAGE 127  
*Elizabeth S. Wisland*  
 Register of Deeds

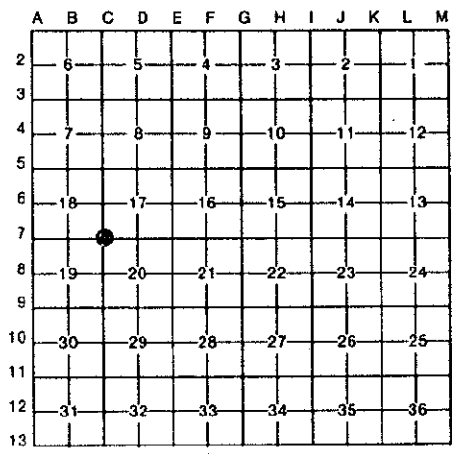
Register of Deeds Stamp & File Number

4. Lot No. \_\_\_\_\_, Recorded Plat \_\_\_\_\_  
 5. Private Claims \_\_\_\_\_

LIBER 3 PAGE 127

I, Marvin E. Myers, in a field survey on December, 19 93

do hereby certify that under requirements of P.A. 74, Michigan P.A. of 1970, the corner points mentioned in lines 1 and 2 above were in conformance with regulations and rules therefore as required in the current manual of survey instructions of the United States Department of the Interior, Bureau of Land Management or by a decree of a Court of Law and/or that the corner points mentioned in lines 3, 4 and 5 above were in conformance with the rules of the Michigan Board of Land Surveyors or by a Decree of a Court of Law; established, re-established, monumented, re-monumented, recovered, found as expressed below:



**NOTE: Not more than 4 corners, all in the same town and range, may be recorded on this certificate.**

**A. Description of original monument and accessories and/or subsequent restoration:**

- |                                                                                                                                                   |                                                                                                                                         |
|---------------------------------------------------------------------------------------------------------------------------------------------------|-----------------------------------------------------------------------------------------------------------------------------------------|
| GLO - June 1852 D.A.Pettibone<br>Mon. - Large Post<br>WIT: None Given                                                                             | 1985 USFS Haase<br>Mon. - Iron<br>WIT: Sq. Post S89°E 79.79'<br>Power Pole S65°E 65.23'                                                 |
| L.185, pg.360 Sept. 14, 1979 G.Henning<br>Mon. - 3/4" Bar<br>WIT: 6" J.Pine N77°W 18.30'<br>Power Pole S64°30'E 64.95'<br>8" J.Pine N51°E 100.30' | Surveyor & Date Unknown from F.J.Arleth<br>Mon. - 5/8" Bar<br>WIT: Same as L.182, pg.360                                                |
|                                                                                                                                                   | 1959 Surveyor Unknown from F.J.Arleth<br>Mon. - 3/4" Iron in W. Ditch Line<br>WIT: NBT 8" Spruce N40°W 30.90'<br>8" Spruce S80°W 30.40' |

**B. Description of corner evidence found and/or method applied in restoring or reestablishing corner:**

Found 5/8" x 31" Bar of record 24'± West of centerline of North - South road. Verified location by measurement to accessories of record and accepted as the best available evidence of the position of the original corner.

**C. Description of monument for corner and accessories established to perpetuate locating the position of the corner:**

- Mon. - Set Std. Crawford County Monument
- WIT: Fd. Nail S. side National Forest Sign S82°E 79.80'
- Fd. Nail S. side Utility Pole S60°E 65.20'
- Fd. Nail NW side 6" J.Pine S11°W 34.25'
- Fd. Nail S. side 8" J.Pine N76°W 17.95'
- Set Std. Nail & Tag NW side 11" J.PINE N72°E 90.70'



Signed by *Marvin E. Myers*

Date December 27, 1993

Surveyor's Michigan License No. 31600

DATE December 20, 1993 PEER GROUP APPROVAL \_\_\_\_\_