

# LAND CORNER RECORDATION CERTIFICATE

Filing Requirement of Act 74, Mich. PA 1970

For Corners In: Crawford Located In \_\_\_\_\_ Corner Code # \_\_\_\_\_  
(County)

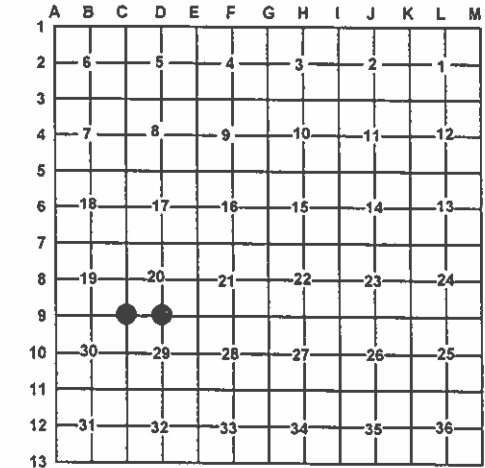
1. Public Land Survey	T	<u>28N</u>	R	<u>3W</u>	<u>C-9</u>
	T	<u>28N</u>	R	<u>3W</u>	<u>D-9</u>
2. Property Controlling in Section	S	_____	T	_____	_____
	S	_____	T	_____	_____
3. Miscellaneous Property in Section	S	_____	T	_____	_____
	S	_____	T	_____	_____

Register of Deeds Stamp & File Number

4. Lot No: \_\_\_\_\_ Recorded Plat: \_\_\_\_\_

5. Private Claims: \_\_\_\_\_

I, Carl T. Kiiskila, in a field survey on July 31, 2008 do hereby state that under requirements of PA 74, Michigan PA of 1970, the corner points mentioned in lines 1 and 2 above were in conformance with regulations and rules therefore as required in the current manual of survey instructions of the United States Department of the Interior, Bureau of Land Management or by a decree of a Court of Law and/or that the corner points mentioned in lines 3, 4 and 5 above were in conformance with the rules of the Michigan Board of Land Surveyors or by a Decree of a Court of Law; established, re-established, monumented, recovered, found as expressed below:



**NOTE: Not more than 2 corners, all in the same town and range, may be recorded on this certificate.**

**A. Description of original monument and accessories and/or subsequent restoration:**

**C-9** G.L.O. Walter Warner 1856 reestablished old corner of sections 19,20,29 and 30.  
 Wit: Beech 18 S75°W 21 links  
 Beech 8 S58°30'E 25 links  
 1970 Kenneth J. Ostling R.L.S. #10068 found a steel fence post established by the Highway Department during I-75 survey set a Department of Conservation Monument.  
 Wit: S. Maple 8" N75°W 53.8'  
 S. Maple 6" S46°E 46.4'

**D-9** G.L.O. Walter Warner 1856 reestablished old quarter section corner.  
 Wit: Beech 9 S65°W 7 links  
 Sugar 10 N46°E 23 links  
 1970 Kenneth J. Ostling R.L.S. #10068 set corner from two probable witnesses set a Department of Conservation Monument.  
 Wit: H. Maple 8" N27°E 53.1'  
 Twin H. Maple 8" S23°E 40.2'

**B. Description of corner evidence found and/or method applies in restoring or re-establishing corner:**

**C-9** Found a Department of Conservation Monument as set by K.J. Ostling.

**D-9** Reestablished the South quarter of section 20 from K.J. Ostling's witnesses

**C. Description of monument for corner and accessories established to perpetuate locating the position of the corner:**

**C-9** Department of Conservation Monument  
 Wit: Set nail and tag in south side of a 8" Scotch Pine S80°W 46.84'  
 Set PK and tag in North side of a power pole N75°W 25.61'  
 Found nail and tag #43046 in North side of a 6" Maple clump S86°E 50.75'  
 Found nail and tag #43046 in Northwest side of a 8" Jack Pine N44°E 79.53'  
 Set Carsonite post East 33'±

**D-9** Set 1"X32" pipe with PS Cap#33981  
 Wit: Set nail and tag in Southwest of 20" Maple S20°E 41.30'  
 Set nail and tag in Northwest side of a 10" Maple N29°E 30.11'  
 Set nail and tag in West side of a 16" Maple N01°W 53.43'  
 Set nail and tag in South side of a 10" Maple N74°E 58.56'  
 Set Carsonite Post 1'± south

Signed by: Carl T. Kiiskila  
 Surveyor's Michigan License No.: 33981

Date: 6-23-09

