

APR 27 1995

CRAWFORD COUNTY PEER GROUP APPROVAL Date Dec 22, 1994 Marvin E. Myers, P.S.

LIBER 3 PAGE 205 COMMISSION

CRAWFORD COUNTY REMONUMENTATION LAND CORNER RECORDATION CERTIFICATE Filing Requirement of Act 74, Mich. P.A. 1970

STATE OF MICHIGAN CRAWFORD COUNTY RECORDED

ALSO ACT 345, PA 1990

10 FEB 95 8:41 A.M.

ELIZABETH H. WIELAND REGISTER OF DEEDS

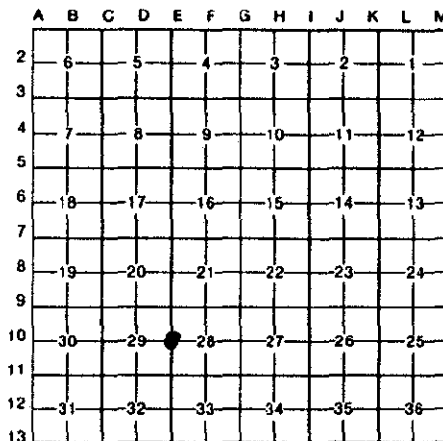
For corners in

Table with columns: CRAWFORD (County), Located In: (Town/Range), Corner Code #. Includes entries for Public Land Survey, Property Controlling in Section, and Miscellaneous Property in Sec.

Register of Deeds Stamp & File Number

- 4. Lot No. Recorded Plat
5. Private Claims

I, Wayne E. Boss, in a field survey on December 8, 1994, do hereby certify that under requirements of P.A. 74, Michigan P.A. of 1970, the corner points mentioned in lines 1 and 2 above were in conformance with regulations and rules therefore as required in the current manual of survey instructions of the United States Department of the Interior, Bureau of Land Management or by a decree of a Court of Law and/or that the corner points mentioned in lines 3, 4 and 5 above were in conformance with the rules of the Michigan Board of Land Surveyors or by a Decree of a Court of Law, established, re-established, monumented, re-monumented, recovered, found as expressed below:



NOTE: Not more than 4 corners, all in the same town and range, may be recorded on this certificate.

A. Description of original monument and accessories and/or subsequent restoration:

- G.L.O. Walter Warner 1857. Set qr. Sec. post
1. Hemlock 14" N08° 30'W, 10 lks.
2. Hemlock 14" S47°E, 13 lks.
S70°30'W, 130 links Old qr. Sec. corner defaced it.

- DNR Mon. Set by K. Ostling July 1970 cor. set in line with fence East & 33' from fence cor. as stated in his Land Co. Record.
1. 9" W. Pine S62°W, 69.6'.
2. 7" W. Pine N71°W, 71.4'.

B. Description of corner evidence found and/or method applied in restoring or reestablishing corner:

- Fd. 12" Long Spk. Riser. Fits K. Ostling Witnesses. Corner is on fence line to East.
1. Fd. 18" Pine Stump N70°W, 70.31'.
2. Fd. 14" Pine Stump S62°W, 69.25'.
G.L.O. W. Warner 1857 dist. to E-9 2684.88' Meas. 2688.81'.
G.L.O. W. Warner 1857 dist. to E-11 2684.88' Meas. 2683.18'.
} To Face

C. Description of monument for corner and accessories established to perpetuate locating the position of the corner:

- E-10 Crawford Co. Mon. Set at exact location of riser.
1. Fd. Nail 12" Pine N40°E, 55.00'.
2. 1/2" Bar & Cap #10685 East 33.00'.
3. Set Spk. 4" Pine S40°W, 30.69'.
4. Fd. Nail 12" Pine N36°W, 110.00'.
This position not established by original government surveyors. This monument is accepted as the best available evidence of the position of the corner.

Signed by Wayne E. Boss, PS Surveyor's Michigan License No. 20703

Date January 3, 1995

