

APR 27 1995

COMMISSION

CRAWFORD COUNTY PEER GROUP APPROVAL

Date Dec 29, 1994

Marvin E. Myers, P.S.

LIBER 3 PAGE 206

CRAWFORD COUNTY REMONUMENTATION LAND CORNER RECORDATION CERTIFICATE Filing Requirement of Act 74, Mich. P.A. 1970

STATE OF MICHIGAN CRAWFORD COUNTY RECORDED

10 FEB 95 8:42 A.M.

ELIZABETH H. WIELAND REGISTER OF DEEDS

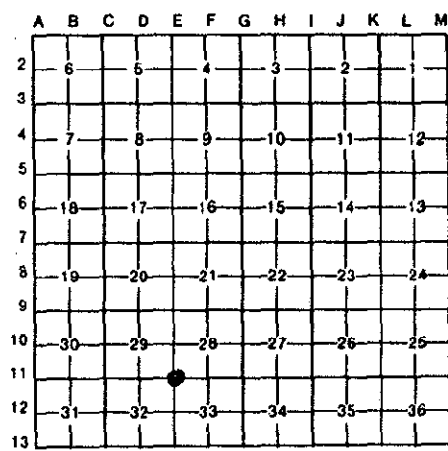
For corners in

ALSO ACT 345, PA 1990

Table with columns: CRAWFORD (County), Located In, Corner Code #. Rows include Public Land Survey, Property Controlling in Section, and Miscellaneous Property in Sec.

Register of Deeds Stamp & File Number

- 4. Lot No. Recorded Plat
5. Private Claims



I, WAYNE E. BOSS, in a field survey on DECEMBER 8, 1994, do hereby certify that under requirements of P.A. 74, Michigan P.A. of 1970, the corner points mentioned in lines 1 and 2 above were in conformance with regulations and rules therefore as required in the current manual of survey instructions of the United States Department of the Interior, Bureau of Land Management or by a decree of a Court of Law and/or that the corner points mentioned in lines 3, 4 and 5 above were in conformance with the rules of the Michigan Board of Land Surveyors or by a Decree of a Court of Law; established, re-established, monumented, re-monumented, recovered, found as expressed below:

NOTE: Not more than 4 corners, all in the same town and range, may be recorded on this certificate.

- A. Description of original monument and accessories and/or subsequent restoration: G.L.O. Walter Warner 1857 Re-established Old corner between Section 28, 29, 32, & 33. 1. Beech 16" S81°E, 22 lks. 2. Hemlock 12" S87°W, 24 lks. A.E. Newman July 5, 1923 Clay Tile Mon. L 121, Pg. 261. 5/8" Iron Set Unknown Origin. K. Ostling Fd. and used 5/8" Iron In July 1970 stating in his Land Corner Record that it was probably set in alignment to survey Co. Rd. 612. Raised with 10" Cabin Spike. 1. Power Pole S46°E, 51.8'. 2. Cor. Fence Post N46°E, 46.9'. 3. 2-6" R. Pine N48W, 88.0'.

In 1977 N.Parker stated he found a 1/2" bar at cor. 1. Fence Cor. N40°E, 46.9'. 2. T Pole S37°W, 51.9'.

- Nov. 91 M. Myers replaced 1/2" bar with 1/2" x 1/8" steel bar & cap and placed Mon. box. LCRC L.3 pg. 28. 1. 7" Twin Red Pine N43°W, 88.0'. 2. Cor. Fence Post N50°E, 46.88'. 3. Nail NE face 7" Elm S35°E, 55.10'. 4. Nail NW face Utl. pole S55°W, 49.00'.

B. Description of corner evidence found and/or method applied in restoring or reestablishing corner:

- Fd. 1/2" Bar in Mon. Box set by M. Myers 1991 1. Fd. Cor. Steel Fence Post N44°E, 46.85 2. Fd. Nail Tw. 6" Elm S39°E, 54.95'. 3. Fd. Nail Guy Pole S42°W, 49.00'. 4. Fd. Nail Tw. 8" Pine N49°W, 88.05'.

- G.L.O. Warner 1857 to E-10 2684.88' Meas. 2683.18'. G.L.O. Warner 1857 to E-12 2615.58' Meas. 2613.27'. G.L.O. Warner 1857 to D-11 2607.00' Meas. 2606.67'. G.L.O. Warner 1857 to F-11 2727.78' 2738.2 (N.Parker) Meas. 2733.83'.

C. Description of monument for corner and accessories established to perpetuate locating the position of the corner:

- E-11 Set Crawford Co. Mon. in Mon. box at exact location of 1/2" Iron Bar removed. 1. Cor. Steel Fence Post N44°E, 46.85'. 2. Fd. Nail Tw. 6" Elm S39°E, 54.95'. 3. Fd. Nail Guy Pole S42°W, 49.00'. 4. Fd. Nail Tw. 8" Pine N49°W, 88.05'.

This position not established by original government surveyors. This monument is accepted as the best available evidence of the position of the corner.

Signed by Wayne E. Boss, PS Surveyor's Michigan License No. 20703

Date JANUARY 1995

