

STATE OF MICHIGAN
DEPARTMENT
OF
NATURAL RESOURCES

LAND CORNER RECORD

CRAWFORD COUNTY

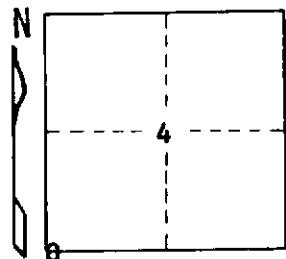
T 28 N R 3 W

DESCRIPTION OF CORNER Sec. corner common to Sectbns 4-5-8-9

CORNER MONUMENT Set Dept. Monument

DATE MONUMENT PLACED AND WITNESSED 5-14-70

WITNESSES TO CORNER..... 33" W. Pine Stp S 09 W 79.6'



10" Poplar S 48 W 22.8'

24" W. Pine Stp N 39 E 8.3'

AND

CIRCLE CORNER REGISTERED

DESCRIPTION IN DETAIL AS TO HOW CORNER WAS LOCATED AND IDENTIFIED OR RESTORED.

This corner was restored by double proportionate measurement between corners one mile North, East, West and 1/2 mile South, during a survey in this area. Unable to locate anything for a previous corner. No conclusive evidence.

SURVEYOR'S SEAL

SIGNED Herbert J. Petting DATE 7-17-70
REGISTERED LAND SURVEYOR 10068

DISTRIBUTION:

County Courthouse
Area Forester (Regions I & II)
District or Region Surveyor
Forestry Div., Lansing

R 4047
Rev. 10/68