

STATE OF MICHIGAN
DEPARTMENT
OF
NATURAL RESOURCES

LAND CORNER RECORD

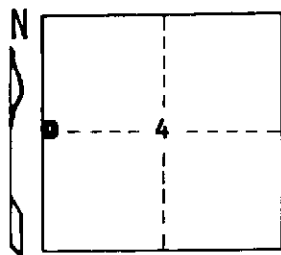
CRAWFORD COUNTY
T 28 R 3 W

DESCRIPTION OF CORNER 1/4 corner common to Sections 4 - 5

CORNER MONUMENT Set Dept. Monument

DATE MONUMENT PLACED AND WITNESSED 5-14-70

WITNESSES TO CORNER.....



6" Hemlock N 42 E 19.8'

5" Hemlock S 86 E 17.1'

AND

CIRCLE CORNER REGISTERED

DESCRIPTION IN DETAIL AS TO HOW CORNER WAS LOCATED AND IDENTIFIED OR RESTORED.

This corner was established during a retracement in this area. Set by proportionate measurement, and according to G.L.O. record for alignment. No sign of a previous corner.

SURVEYOR'S SEAL

SIGNED *Frank J. Ostling* DATE 7-17-70
REGISTERED LAND SURVEYOR 10068

DISTRIBUTION:

County Courthouse
Area Forester (Regions I & II)
District or Region Surveyor
Forestry Div., Lansing

R 4047
Rev. 10/68