

STATE OF MICHIGAN
DEPARTMENT
OF
NATURAL RESOURCES

LAND CORNER RECORD

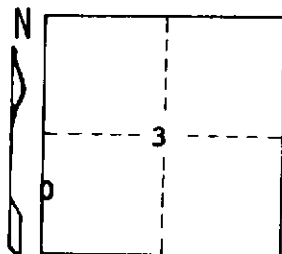
CRAWFORD COUNTY
T 28 N R 3 W

DESCRIPTION OF CORNER S 1/16 corner common to Sections 3-4

CORNER MONUMENT Set 3/4" Pipe

DATE MONUMENT PLACED AND WITNESSED 5-14-70

WITNESSES TO CORNER..... BO Power Pole N 30 E 69.9'



BT 18" Tw Maple N 61 E 64.1'

BT 6" Wh. Pine N 70 W 62.0'

AND

CIRCLE CORNER REGISTERED

DESCRIPTION IN DETAIL AS TO HOW CORNER WAS LOCATED AND IDENTIFIED OR RESTORED.

This corner was set by standard survey procedure during a retracement in this area.
Corner set to define state land boundary. Falls 3' East of Center of pavement.

SURVEYOR'S SEAL

DISTRIBUTION:

SIGNED *Annexa Ostling* DATE 7-17-70
REGISTERED LAND SURVEYOR 10068

County Courthouse
Area Forester (Regions I & II)
District or Region Surveyor
Forestry Div., Lansing

R 4047
Rev. 10/68