

STATE OF MICHIGAN
DEPARTMENT
OF
NATURAL RESOURCES

LAND CORNER RECORD

CRAWFORD & OTSEGO COUNTY

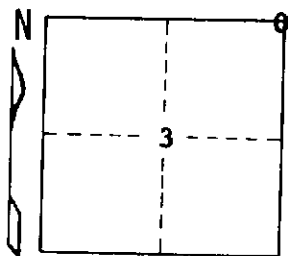
T 29 N R 3 W
T 28 N R 3 W

DESCRIPTION OF CORNER Section corner common to Sections 2-3-34-35

CORNER MONUMENT Department Monument

DATE MONUMENT PLACED AND WITNESSED 6-17-70

WITNESSES TO CORNER.....



10" Elm S 50 E 16.0'

7" Elm N 68 W 37.8'

AND

4" Tw. H. Maple N 10 E 30.1'

CIRCLE CORNER REGISTERED

DESCRIPTION IN DETAIL AS TO HOW CORNER WAS LOCATED AND IDENTIFIED OR RESTORED.

This corner was restored during a retracement in this township. Set corner 33' West of fence corner, fences running South and East. Unable to locate a previous monument, but feel this point conforms, proportionately to Newman record, and to other occupational signs between 2-3. Falls in line with old road grade South.

SURVEYOR'S SEAL

DISTRIBUTION:

SIGNED *Thomas J. Gelling* DATE 7-7-70
REGISTERED LAND SURVEYOR 10068

County Courthouse
Area Forester (Regions I & II)
District or Region Surveyor
Forestry Div., Lansing

R 4047
Rev. 10/68