

MICHIGAN  
DEPARTMENT OF CONSERVATION  
FORESTRY DIVISION

# LAND CORNER RECORD

T. 32 N.R. 4 W.

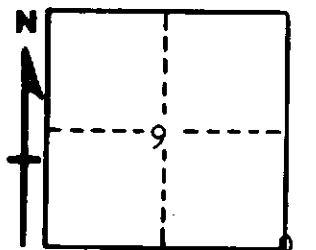
Charlevoix COUNTY

DESCRIPTION OF CORNER Section corner common to Sections 9 - 10 - 15 - 16

CORNER MONUMENT Set 1" pipe with 4" Brass cap

DATE MONUMENT PLACED AND WITNESSED May 16, 1962

WITNESSES TO CORNER.....



CIRCLE CORNER REGISTERED

8" H. Maple N 84 W 8.1'

6" H. Maple N 9 E 16.4'

AND

7" H. Maple S 37 E 17.1'

**DESCRIPTION IN DETAIL AS TO HOW CORNER WAS LOCATED AND IDENTIFIED OR RESTORED.**

This corner was restored while making a survey in this area. Set corner from probable U. S. BT stumps, remains of Maple stumps in place for both BTs. Could find no stake, but soil very rocky and discolored. This point makes the 1/2 miles between Sections 9 - 16 of equal measurement, although it falls some 10 feet south of a line over the 1/4 and section corner west. It was felt that the probability of this corner being original was sufficient to reject the method of proportionate measurement for latitude since the very hilly terrain makes for inconclusive results.

**SURVEYOR'S SEAL**

SIGNED

Kenneth J. Ostling  
REGISTERED LAND SURVEYOR

DATE

May 16, 1962