

MICHIGAN
DEPARTMENT OF CONSERVATION
FORESTRY DIVISION

LAND CORNER RECORD

T. 32 N.R. 4 W..

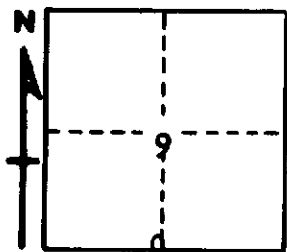
Charlevoix COUNTY

DESCRIPTION OF CORNER 1/4 corner common to Sections 9 - 16

CORNER MONUMENT Set 1" pipe with 4" brass cap

DATE MONUMENT PLACED AND WITNESSED May 16, 1962

WITNESSES TO CORNER.....



CIRCLE CORNER REGISTERED

7" Twin Ash S 52 W 45.9'

7" Twin Ash N 36 W 21.0'

AND

DESCRIPTION IN DETAIL AS TO HOW CORNER WAS LOCATED AND IDENTIFIED OR RESTORED.

This corner was found while making a survey in this area. Recovered corner as established by Robinson in early 1900s. Found very old stake point at corner, with remains of Robinson's Hemlock NBT stump in place SE. Checks very well for alignment and distance considering proportionate measurement. Also, the remains of a small Maple stump in place SW for probable U. S. BT. Very likely a restoration of U. S. corner.

SURVEYOR'S SEAL

SIGNED

Kenneth J. Ostlund
REGISTERED LAND SURVEYOR

DATE

May 17, 1962