

MICHIGAN
DEPARTMENT OF CONSERVATION
FORESTRY DIVISION

LAND CORNER RECORD

T. 32 N.R. 4 W.

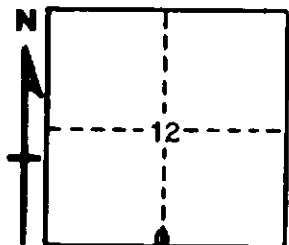
Charlevoix COUNTY

DESCRIPTION OF CORNER 1/4 corner common to Sections 12 - 13

CORNER MONUMENT Set 1" pipe with 4" brass cap

DATE MONUMENT PLACED AND WITNESSED May 16, 1962

WITNESSES TO CORNER.....



CIRCLE CORNER REGISTERED

9" Elm N 61 E 5.6'

8" H. Maple N 48 W 17.8'

AND

DESCRIPTION IN DETAIL AS TO HOW CORNER WAS LOCATED AND IDENTIFIED OR RESTORED.

This corner was found while making a survey in this area. Found very old stake point at corner, as established by Robinson in early 1900s. Robinson's SW NBT, a 30" Hemlock stump, in place showing good face. NW NBT all gone. Falls very nearly at midpoint, but 14 links out of line between Section corners. Probably a restoration of the government corner.

SURVEYOR'S SEAL

SIGNED

Kenneth J. Ostberg
REGISTERED LAND SURVEYOR

DATE

May 17, 1962