

FEB 22 2001

STATE OF MICHIGAN  
COUNTY OF CHARLEVOIX  
REGISTER OF DEEDS

96 DEC 11 PM 3:09

SECTION

LAND CORNER RECORDATION CERTIFICATE  
Filing Requirement of Act 74, Mich. P.A. 1970

For corners in  
Charlevoix

(County)

Located in:

Corner Code #

1. Public Land Survey

T 32N R 7W  
T 33N R 7W

K-1 ✓  
K-13

2. Property Controlling  
in Section

S T R  
S T R

3. Miscellaneous  
Property in Sec.

S T R  
S T R

*Charles M. Brubaker*  
REGISTER OF DEEDS

Register of Deeds Stamp & File Number

4. Lot No. \_\_\_\_\_, Recorded Plat \_\_\_\_\_

5. Private Claims \_\_\_\_\_

	A	B	C	D	E	F	G	H	I	J	K	L	M
2	6	5	4	3	2	1							
3													
4	7	8	9	10	11	12							
5													
6	13	17	16	15	14	13							
7													
8	19	20	21	22	23	24							
9													
10	30	29	28	27	26	25							
11													
12	31	32	33	34	35	36							
13													

I, Wayne E. Boss, in a field survey on OCTOBER 14, 19 96, do hereby certify that under requirements of P.A. 74, Michigan P.A. of 1970, the corner points mentioned in lines 1 and 2 above were in conformance with regulations and rules therefore as required in the current manual of survey instructions of the United States Department of the Interior, Bureau of Land Management or by a decree of a Court of Law and/or that the corner points mentioned in lines 3, 4 and 5 above were in conformance with the rules of the Michigan Board of Land Surveyors or by a Decree of a Court of Law; established, re-established, monumented, re-monumented, recovered, found as expressed below:

NOTE: Not more than 4 corners, all in the same town and range, may be recorded on this certificate.

A. Description of original monument and accessories and/or subsequent restoration:

- K-1 GLO JUNE 1839 1" IR. BAR SET BY UNKNOWN JOHN HODGSON USED & WITNESSED BY SET. COR. POST LAWRENCE FEINDT IN 1978
- 1. BEECH 24 N51E 6 3. NORTH 14.45' 30" MAPLE
- 2. SUGAR 12 N66W 31 4. S10E 20.25' 16" MAPLE
- 5. S40E 26.55' 6" MAPLE

B. Description of corner evidence found and/or method applied in restoring or reestablishing corner:

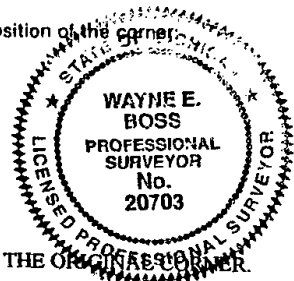
- K-1 FD. 1" BAR IN CTR. OF RD. NO TIE TO GLO
- 3. NORTH 14.45' 36" MAPLE
- 4. S10E 20.25' 22" MAPLE
- 5. S40E 26.55' 8" MAPLE

Charlevoix Co. Surveyor  
APPROVED  
Signature Mary C. Feindt  
Date: Nov 13, 1996

C. Description of monument for corner and accessories established to perpetuate locating the position of the corner:

- K-1 & K-13 K-1 T32N-R7W COMMON CORNER TO K-13 T33N-R7W CHARLEVOIX CO. MON. SET
- 3. NORTH 14.58' 36" MAPLE NEW SPIKE & TAG SET
- 4. S10E 19.02' 22" MAPLE NEW SPIKE & TAG SET IN ROOT
- 5. S40E 27.17' 8" MAPLE NEW SPIKE & TAG SET
- 6. N60W 38.11' 8" MAPLE NEW SPIKE & TAG SET

AND IS ACCEPTED AS THE BEST AVAILABLE EVIDENCE OF THE POSITION OF THE ORIGINAL CORNER.



Signed by [Signature] Date 11/29/96  
Surveyor's Michigan License No. 20703 LIBER 003 PAGE 83

*This sign should have been returned in the last time*