

MICHIGAN
DEPARTMENT OF CONSERVATION
FORESTRY DIVISION

LAND CORNER RECORD

T. 33 N.R. 4 W

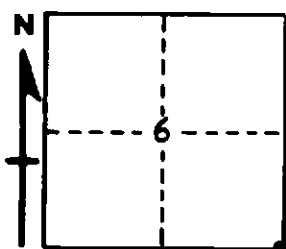
Charlevoix COUNTY

DESCRIPTION OF CORNER Section corner common to Sections 5-6-7-8

CORNER MONUMENT Left 3/4" pipe in place below surface of road

DATE MONUMENT PLACED AND WITNESSED 10/12/61

WITNESSES TO CORNER.....



12" Elm - S83W - 52.2 feet

10" Elm - N38E - 94.8 feet

AND

CIRCLE CORNER REGISTERED

DESCRIPTION IN DETAIL AS TO HOW CORNER WAS LOCATED AND IDENTIFIED OR RESTORED.

This corner was found while making a survey in this area. Found 3/4" pipe in N-S county road, previously located by Marcus Schaaf, RLS, in a survey in early 1930s. Appears to have been established in early 1900 survey by county surveyor since it checks measurements of record west to town line. This location makes the mile west approximately six chains short and the mile east about 4 chains long. However, this condition appears to have existed from the time of the earliest county surveys indicating the possibility of an erroneous government survey which actually created the situation noted above. Surrounding occupation appears to have accepted this point as the corner, and did not find sufficient evidence to justify moving it.

SURVEYOR'S SEAL

SIGNED Kenneth J. Osting DATE 10/17/61
REGISTERED LAND SURVEYOR