

MICHIGAN  
DEPARTMENT OF CONSERVATION  
FORESTRY DIVISION

# LAND CORNER RECORD

T. 33 N.R. 4 W

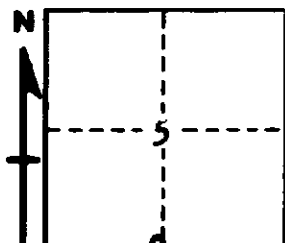
Charlevoix COUNTY

DESCRIPTION OF CORNER 1/4 corner common to Sections 5 and 8

CORNER MONUMENT Set # Squared Cedar post, only

DATE MONUMENT PLACED AND WITNESSED August 17, 1961

WITNESSES TO CORNER.....



5" Spruce - N57E - 7.1 feet

20" Cedar stump - N15W - 23.0 feet

AND

CIRCLE CORNER REGISTERED

DESCRIPTION IN DETAIL AS TO HOW CORNER WAS LOCATED AND IDENTIFIED OR RESTORED.

This corner was established by proportionate measurement, midpoint on line, between section corners, while making a survey in this area. No evidence of a previous corner.

SURVEYOR'S SEAL

SIGNED Kenneth J. Ostling DATE 8/18/61  
REGISTERED LAND SURVEYOR